

HUME CITY COUNCIL

Waste Guide



hume.vic.gov.au/waste





Hume City Council plays an important role in reducing and managing waste for our residents, and as our population grows, so too will the volume of waste generated.

We provide residents with a range of services to assist with managing waste responsibly and sustainably.

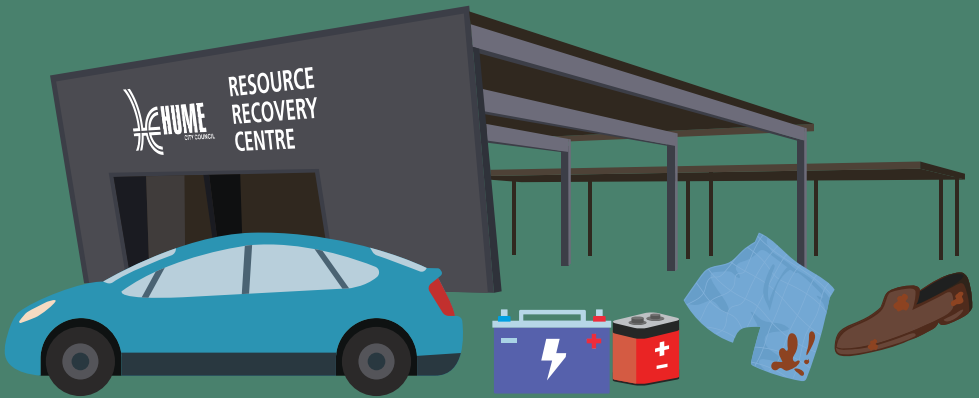
This guide provides a summary of these services which are available to both tenants and owners.

For more information on these services scan the QR code, visit hume.vic.gov.au/waste or call 9205 2200.



Contents

Top 5 waste items	5
Kerbside bin collections	6
When is bin day?	7
FOGO bin	8
Food waste composting.....	9
Recycling bin	10
Garbage bin	11
Hard waste	12
Tip passes	13
Resource recovery centres	14
E-waste	16
Hazardous waste	17
Mulching days	17
Litter and dumped rubbish	18
Report dumped rubbish	18
Waste education	19
Bin Inspection Program	19



Top 5 waste items

Did you know that almost all the contamination in our recycling bins is made up of just five items?

We have some easy, out of the bin alternatives for all five!

Food

Food and drinks are a big contaminant in recycling bins. Food can ruin an entire truckload of recycling, resulting in the whole load going to landfill!

The best thing to do is clean out any leftovers or drinks from containers before placing them in the recycling bin.

All food is now accepted in the organics bin, and we provide a 70% discount on compost systems.

Help us keep recycling clean and give food another life - as compost!

Clothes

Clothing and textiles are a big part of our recycling contamination. The fabrics get wrapped up in machines at the sorting facility.

Old clothing and toys can be donated and reused.

E-waste

E-waste such as broken devices and batteries can't go in the bin. They can be dangerous if damaged.

You can take small e-waste items, like phones and batteries to our Green Collect free drop-off sites at any of our libraries, Resource recovery centres, or local stores like Officeworks, Aldi and Battery World.

Plastic Bags

Soft plastics and wrappers don't go in our recycling bins. A general rule is: if you can scrunch it up in your hand, it doesn't go in the recycling bin! Take these items to a REDcycle drop-off point at your participating local supermarket.

Bagged recycling

Don't bag your recyclables or they will end up in landfill! Chuck them in the recycle bin loosely. Only loose items can be sorted and recycled correctly.

Kerbside bin collections

Types of bins

Recycling and garbage bins are provided to residents for the safe and easy disposal of general household waste and recyclable materials.

Residents can also opt to have a FOGO bin to dispose of all food and garden organics waste, such as leftovers, grass clippings, small branches, leaves and small logs up to 30cm in diameter.

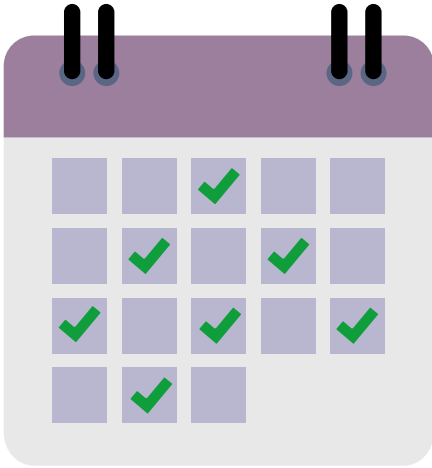
Additional bins can be provided for a fee.

To have your bins collected, please:

- ✓ place bins side by side, leaving at least 60cm or an arm's length, between bins and other objects
- ✓ ensure there is clear access to your bin, away from parked cars, tree canopies and other objects
- ✓ place bins out the night before your collection
- ✗ do not overfill your bin. If the bin is too heavy, it cannot be emptied.



When is bin day?



To find out your bin collection day, scan the QR code and follow the prompts, or call 9205 2200.

Council undertakes collections on all public holidays except for New Year's Day, ANZAC Day and Christmas Day. On these days, the collection will be take place on the following day.



FOGO bin

Hume City Council has introduced a new food organics and garden organics (FOGO) waste collection service. This means all food can now go into your FOGO bin as organic waste.



Why the new service?

The less waste we send to landfill, the better the environmental outcome. Putting food scraps in the bin with garden waste means that it can be turned into a valuable resource called 'compost' which can be used in gardens, at parks and farms.

Order a free kitchen caddy

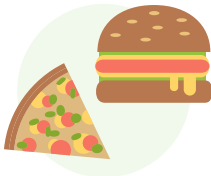
If you have an organics bin at your home, you can order your free kitchen caddy today. All new orders for FOGO bins will receive a free caddy too.



Fruit & vegetables



Seafood & meat



Takeaway & leftover food



Garden:
Leaves & garden cuttings,
weeds & grass clippings,
small branches & twigs



✓
Only these items can be recycled in your bin.



Food waste composting

What is composting?

Composting is a great way of recycling household food and garden scraps to keep that goodness in your garden.

It's easier and cleaner than you might have thought.

Council provides a 70% discount and free shipping on compost systems.

To claim your discount and learn more about compost visit humecompost.com.au

Types of composting

Compost bin

For food scraps, garden pruning, grass and dead leaves.

Worm farm

For disposal of food scraps and small amounts of paper.

Bokashi

For food scraps, including meat and cooked leftovers.

Why compost at home?

- ✔ Improve soil quality.
- ✔ Reduce the amount of organic waste going to landfill.
- ✔ Teach the family about food recycling.
- ✔ Reduce your food waste and save money.



Recycling bin

How to make sure you recycle right:

If it's hard plastic, like shampoo bottles or milk containers, put it in your yellow bin.

If it's soft plastic, like chip packets or cling film, put it in your red bin.

Items in your recycling bin should be empty of all food and liquids.

All items must go into your recycling bin loose, not in a container or bag.

- ✓ Keep it clean.
- ✗ No food.
- ✗ No bags.



NO bags or bagged items



Paper & cardboard



Cans, aerosols & aluminium foil



Rigid plastic bottles & containers



Glass bottles & jars



Garbage bin

The contents of your red bin go directly to landfill.

Once waste goes to landfill, it remains there. Materials such as food waste decompose into greenhouse gases - hard plastics can take thousands of years to disintegrate!

Try to avoid sending waste to landfill where possible.

- ✓ Put food waste in the organics bin or compost
- ✓ Recyclable containers in the recycling bin.
- ✓ Take e-waste to a council drop-off site.
- ✓ Avoid buying single use items where appropriate and reusables are available.



Material for landfill



Broken glass, crockery & mirrors



Nappies & pet poo



General rubbish & plastic bags



Non-donatable clothes & toys



Hard waste

Hume City Council offers a free at-home hard waste collection service to all Hume residents, including residential ratepayers and those renting homes.

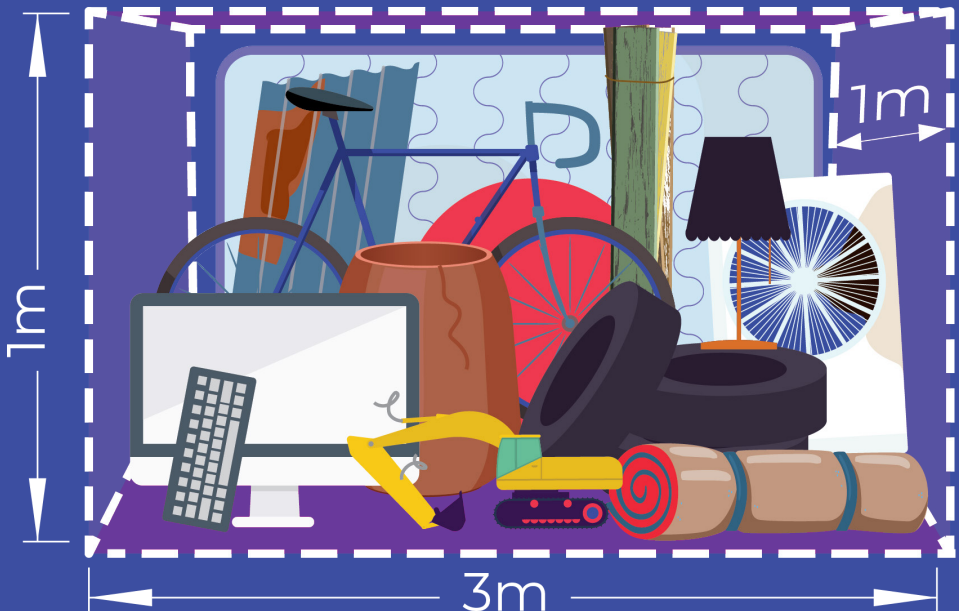
Every resident can access two free at-home hard waste collections and two free drop-off visits to our Resource recovery centres.

We can collect three cubic metres of hard waste at each collection or can combine your two free collections into one large six cubic metre collection for the year.

Three cubic metres is 3m x 1m x 1m
Six cubic metres is 6m x 1m x 1m

Please ensure your items are placed out neatly for collection, otherwise they may not be collected.

You can book a hard waste collection online at any time. Alternatively, please call 9205 2200 from Monday to Friday between 8am to 5pm and press option 3 to book your collection.



Tip passes

All Hume residents, including those renting homes can access a free tip pass for items that are too big for the bin.

Use the barcode on your Rates Notice or contact Customer Service on 9205 2200 to obtain a tip pass.

Locations:

Campbellfield

Bolinda Road Resource Recovery Centre

Sunbury

Riddell Road Waste and Recycling Transfer Station and Landfill

Our centres are open seven days* from 8am to 4pm

*Closed on New Year's Day, Good Friday, Anzac Day, Christmas Day and Total Fire Ban days.



Resource recovery centres

We provide residents with the opportunity to dispose of excess waste safely and sustainably. The facility accepts a range of different material, and many items can be disposed of for FREE.

Save money by organising your trailer into recyclable items and household rubbish. Remember to cover your items while transporting them.

Free items for disposal

- ✔ Paint
- ✔ Car batteries and other batteries
- ✔ Empty gas bottles
- ✔ Motor oil (up to 10L free of charge, then \$2 per litre)
- ✔ Fluorescent tubes and Compact Fluorescent Lamps (CFLs)
- ✔ Scrap metal including white goods
- ✔ Household cleaning, garden and automotive chemicals
- ✔ Selected household recyclables including paper and cardboard, steel and aluminium cans

Disposal fees

To find out about disposal fees, scan the QR code or visit hume.vic.gov.au/visitingthetip



Hume Clean Days

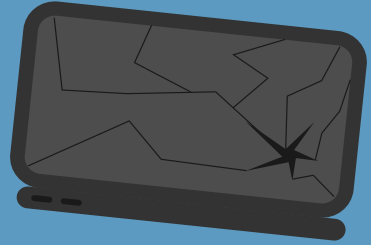
You can drop off these large household items for free during our Hume Clean Day events.

- ✔ Mattresses
- ✔ Couches
- ✔ Tyres
- ✔ Whitegoods (including fridges, washing machines and dryers)
- ✔ E-waste (including televisions, computers, printers, DVDs, CDs, speakers, sound equipment, DVD players, video recorders, mobile phones, household appliances)

Any other furniture or waste will attract standard fees and charges.

To find out about Hume Clean Days, scan the QR code or visit hume.vic.gov.au/wasteoptions





E-waste

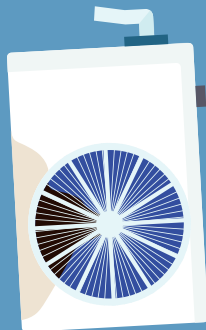
E-waste or electronic waste is any item with a plug, battery or cord that is no longer working or wanted.

E-waste is banned from landfills and can't be disposed of in your kerbside bin.

Small items like old phones or batteries can be taken to the Hume Global Learning Centres.

Large items can be taken to our Resource recovery centres or be collected as hard rubbish.

- ✓ Batteries
- ✓ Light globes
- ✓ Computers and keyboards
- ✓ Cords
- ✓ Mobile phones
- ✓ Televisions and radios
- ✓ Headphones
- ✓ Air conditioners
- ✓ Whitegoods
- ✓ Small appliances
- ✓ Fluorescent lights
- ✓ Power tools
- ✓ Printer cartridges



Hazardous waste

Household hazardous waste includes unwanted household products and chemicals that can be harmful to people's health or pollute the environment.

Hazardous waste often has labels such as 'warning', 'caution', 'danger', 'poison' or 'do not dispose of with household rubbish'.

Hazardous waste must NOT be put out with your household rubbish or poured down the drain.

You can drop off household chemicals at any free Detox Your Home event, held around Victoria. Alternatively, please contact one of our Resource recovery centres to find out if they can accept your items.

Mulching days

A free service for large branches.

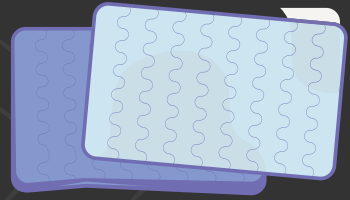
If you have branches that are too big for your bin, drop them off for us to mulch!

Council can accept up to four cubic metres of mulching materials per household.

If you'd like to take some mulch home for your garden, this can be collected at the end of mulching days.



To find out about mulching days, scan the QR code and read under 'tree mulching' or visit hume.vic.gov.au/wasteoptions



Litter and dumped rubbish

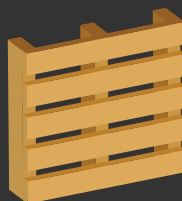
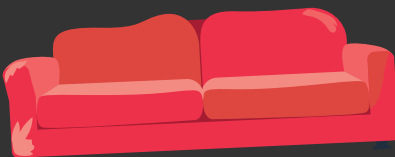
Litter and dumped rubbish is not only unpleasant to look at, it has significant environmental impacts.

Littering makes our streets untidy and can pollute our waterways and beaches. We can all do our bit to keep our communities litter free by putting our rubbish and recycling bins out correctly and putting litter in bins.

Report dumped rubbish

Council investigates littering and illegal dumping and this could result in prosecution for serious offenders. The penalties for illegal dumping can be significant.

If you see someone littering or dumping rubbish note down the date, time, location and any identifying features such as a car registration and report this to Council. Reports can be made online, or phone, and you can remain anonymous.



Waste education

Our waste team engages with the community through a range of events, programs and partnerships to influence positive waste and recycling behaviours.

Presentations and talks about waste and recycling can be given on site by our waste educators and can be tailored to suit your needs.

Presentations are given free of charge and interested schools and community groups are welcome to contact Council.

Bin Inspection Program

We conduct random bin inspections to:

- ✔ ensure residents are putting the right items in the right bin
- ✔ reduce the impact of contamination.

Contamination occurs when people put incorrect items in their recycling bin or food and garden organics (FOGO) bin.

You can tell if your bins have been inspected because you'll see a tag on your bin.

Good recyclers with no contamination will receive a 'good job' bin tag.

Contaminated bins will receive a 'warning' bin tag, indicating that items were found in the bin that shouldn't be there. These tags also have more information on how to recycle correctly.

A 'warning' bin tag alerts the household that contamination was found in the bin and as a result, the bin was not collected.

What to do if your bin is rejected

If your bin has been rejected (not picked up) following an inspection you will need to:

- ✔ remove the incorrect items indicated on the tag
- ✔ call us to arrange collection.



HumeLink

Multilingual telephone
information service

Enquiries 9205 2200

للمعلومات باللغة العربية	9679 9815
معلومات تليفون بالعربية	9679 9809
Za informacije na bosanskom	9679 9816
Za informacije na hrvatskom	9679 9817
Για πληροφορίες στα ελληνικά	9679 9818
Per avere informazioni in italiano	9679 9819
За информације на српском	9679 9820
Para información en español	9679 9821
Türkçe bilgi için	9679 9822
Muốn biết thông tin tiếng Việt	9679 9823
For other languages...	9679 9824

Hume City Council

1079 Pascoe Vale Road, Broadmeadows
PO Box 119, Dallas, Victoria 3047
Telephone 9205 2200 Facsimile 9309 0109

contactus@hume.vic.gov.au
hume.vic.gov.au

