

Social Impact Assessment Planning Policy and Guidelines

Policy Reference No:	CP2014-07-01
File Reference No:	HCC14/207
Strategic Objective:	Health, Safety & Wellbeing
Date of Adoption:	28 July 2014
Date for Review:	July 2015
Responsible Officer:	Manager Social Development
Department:	Social Development

Council pursues its vision for Hume as a prosperous, sustainable and vibrant City renowned for social justice, lifelong learning and community inclusion.

Council's Social Justice Charter, incorporating the Citizens' Bill of Rights, realises this vision where a city in which its citizens, together with those who work within and visit Hume, experience the highest quality of life, a healthy admiration for the environment and a genuine respect for friends, neighbours and strangers alike.

This vision informs the Social Impact Assessment Planning Policy and Guidelines

Policy Reference No: CP2014-07-01	Date of Adoption: 28 July 2014
Review Date: July 2015	Responsible Officer: Manager Social Development
	Department: Social Development
Page 2 of 19	

Social Impact Assessment Planning Policy and Guidelines

1. INTRODUCTION

Social Impact Assessment is the process *'through which efforts are made to estimate in advance the likely social consequence of a decision or action by a public or private entity. The social impact assessment seeks to achieve improved outcomes and avoid adverse impacts such as foreseeable negative consequences arising from local government policies of land use decisions.'*¹

It is anticipated that Hume City Council will experience an increase in the demand for major development and in order to achieve sustainable development Council will need to ensure that social issues are integrated with land use planning and that the relationship between the two are given equal recognition.

Social impact assessment is underpinned by the core principle of a holistic or integrated planning approach that links social and cultural, physical, environmental and economic issues.

The aim of the Social Impact Assessment Planning Policy and Guidelines (SIAPPG) is to provide a planning assessment framework for Council and prospective applicants that can be applied in a uniform and consistent manner.

The policy will provide guidance in the assessment of development proposals in regard to determining any social impact and how to accommodate such impacts.

Hume acknowledges the strong links between environmental performance of development and the social impacts on occupants so the SIAPPG also includes a number of environmentally sustainable design and development (ESD) principles.

Although the SIAPPG is not a statutory document it is a guideline to assist Council and applicants make consistent decisions as well as provide relevant and appropriate information for decision making. SIAPPG underpins better planning outcomes for communities in Hume City.

It is intended to incorporate this document into the Municipal Strategic Statement (MSS).

Policy Reference No: CP2014-07-01	Date of Adoption: 28 July 2014
Review Date: July 2015	Responsible Officer: Manager Social Development
	Department: Social Development
Page 3 of 19	

Social Impact Assessment Planning Policy and Guidelines

2. POLICY STATEMENT

- 2.1 In relation to the Social Impact Assessment Policy and Guidelines, it is Council's policy to:
- Assist applicants and the community identify and address the potential positive and negative social impacts of development, and
 - Consider informed planning proposals that have agreed measures in place to mitigate against adverse consequences of development.

3. PURPOSE OF POLICY AND GUIDELINES

3.1 The Social Impact Assessment Planning Policy and Guidelines (SIAPPG) will assist applicants, the community and Council identify and address the potential positive and negative social impacts of such developments resulting in well considered and informed planning proposals that have agreed measures in place to mitigate against adverse consequences.

- 3.2 These guidelines describe:
- Two levels of social impact assessment process (refer to Section 4. Social Impact Assessment Process);
 - The type of information required;
 - The land uses and or developments which require assessments; and
 - How to prepare and assess social impact.

- 3.3 These guidelines will:
- Assist Council and prospective applicants assess the social impact/s of developments;
 - Identify those groups and individuals that may be affected;
 - Address the adverse impact of development at the planning stage and introduce measures of improvement;
 - Provide an open, transparent and consistent approach to the assessment of social, cultural, economic, ecological and environmental effects in recognition that such social impacts may sometimes overlap; and
 - Inform the assessment process by the requirement of permit conditions relating to development contributions towards community services/facilities.

4. SCOPE

- 4.1 This policy applies to the consideration of all the following application proposals:
- Development of Council owned land and all land under care, control and management of Council;
 - Residential developments of more than 10 dwellings;
 - Place of assembly;
 - Place of worship;
 - Childcare centres;
 - Medical centres;

Policy Reference No: CP2014-07-01	Date of Adoption: 28 July 2014
Review Date: July 2015	Responsible Officer: Manager Social Development
	Department: Social Development
Page 4 of 19	

Social Impact Assessment Planning Policy and Guidelines

- Rezoning from industrial use to residential use;
- Rezoning of Public Park and Recreation Zone (PPRZ);
- Increasing the bulk or intensification of facilities on land zoned PPRZ (e.g. construction of an additional sports/recreation pavilion or leisure facility can result in a significant number of people and vehicle traffic being generated for extended periods of time);
- Where there is change in land use to facilitate residential development;
- Significant residential developments with significant population increase subdivisions);
- Where the development is not generating any community services on site yet is generating significant demand on existing services in the local area;
- Where the development will provide additional services that are not provided within the local area; and
- Out of sequence community infrastructure development in growth area subdivisions.

4.2 Items excluded from the scope of the SIAPPG (but not limited to):

- Education Institutions provided by State Government*
- Gaming venues, including bingo centres (refer to Hume City Council - Responsible Gaming Policy)
- Prisons*
- Refugee detention centres*

*Any Commonwealth or State owned and operated land is exempt from any planning permit and is therefore exempted from the SIAPPG.

5. PURPOSE OF SOCIAL IMPACT ASSESSMENT

5.1 The purpose of Social Impact Assessment is to identify whether a development proposal will:

- Adversely affect the health and wellbeing of the community;
- Increase or decrease employment opportunities;
- Have a significant impact upon the existing housing stock in the area;
- Have any impact upon existing community infrastructure;
- Increase the demand for community facilities or community services in the area;
- Require on-site support services;
- Increase conflict in the community or unfavourably impact the identity of the community;
- Enhance or detract from the cultural life of the community;
- Create areas of risk for occupants or pedestrians within the area or adjacent to the proposed development;
- Increase community concern regarding public safety;
- Increase or diminish the sense of community wellbeing;
- Increase or reduce the number of people living, working or visiting the site;

Policy Reference No: CP2014-07-01	Date of Adoption: 28 July 2014
Review Date: July 2015	Responsible Officer: Manager Social Development
	Department: Social Development
Page 5 of 19	

Social Impact Assessment Planning Policy and Guidelines

- Ensure that appropriate Environmentally Sustainable Design & Development features are incorporated to enhance the liveability and affordability of the development now and into the future;
- Ensure that any infill development proposal can adequately mesh into an existing community;
- Determine any contributions towards community or other facilities;
- Improve/foster sustainable access to community facilities; and
- Inform Council's decision making with regard to the Charter of Human Rights and Responsibilities, to ensure that rights are not limited.

6. SOCIAL IMPACT ASSESSMENT PROCESS

- 6.1 For a development proposal requiring consideration of its social impact, the applicant will be required to provide firstly:
- A Social Impact Comment (SIC – basic level assessment); and if requested
 - A Social Impact Assessment (SIA – more in-depth and should be undertaken by a suitably qualified professional).

Refer to 4.3 to ascertain if your application requires a less rigorous assessment (SIC) or more rigorous assessment (SIA).

The following process indicates how the social impact assessment process should be undertaken

SIAPPG Flowchart – How the Process Operates

Policy Reference No: CP2014-07-01	Date of Adoption: 28 July 2014
Review Date: July 2015	Responsible Officer: Manager Social Development
	Department: Social Development
Page 6 of 19	

Social Impact Assessment Planning Policy and Guidelines

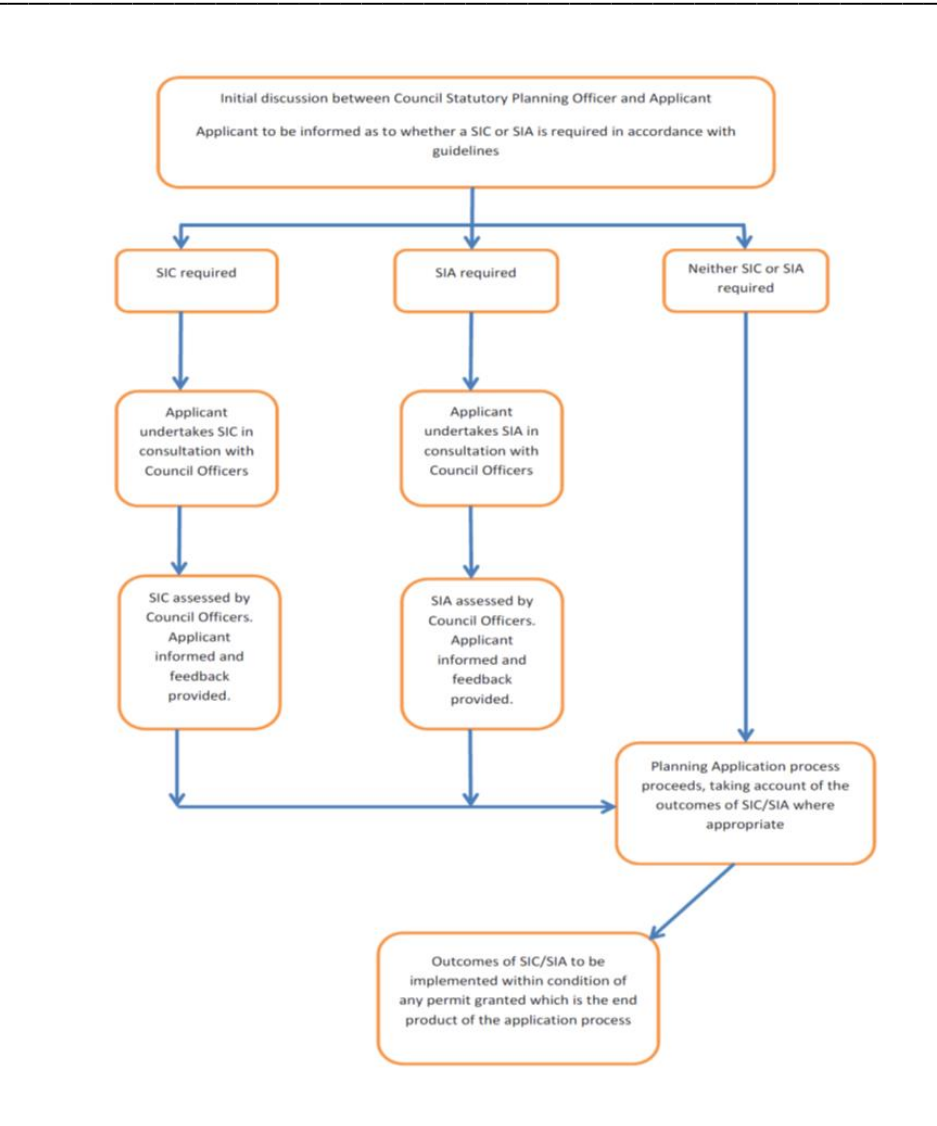


Diagram A:
SIAPPG Flowchart – How the Process Operates

6.2 Social Impact Comment (SIC)

This is an initial and basic assessment that must provide sufficient information for Council to make a decision. This assessment, to be undertaken by the applicant, should not require specialist technical assistance to complete, although in some instances this may be preferable.

In preparing a SIC the applicant should demonstrate that the following issues have been considered and assessed:

- How does the development impact on the local area?
- What is the extent of the impact? What are the positive and negative impacts of the development on the local community?
- Community participation in the project proposal will only be required from person/s directly affected i.e. neighbours and key stakeholders.

Policy Reference No: CP2014-07-01	Date of Adoption: 28 July 2014
Review Date: July 2015	Responsible Officer: Manager Social Development
	Department: Social Development
Page 7 of 19	

Social Impact Assessment Planning Policy and Guidelines

- Describe the negative and positive aspects of the proposal, highlighting how the negative aspects will be resolved in the interests of those affected i.e. neighbours, occupants or the wider community.

Council has developed an assessment checklist for applicants (refer to Social Impact Assessment Planning Policy and Guidelines – Checklist).

6.3 Social Impact Assessment (SIA)

This is an in-depth (comprehensive) assessment about the actual and potential social impacts and it should be undertaken by a suitably qualified professional.

The SIA provides an in-depth analysis of social impacts for proposals where significant impacts are likely to occur. Whilst Council does not have a preferred model to prepare and develop a SIA response, it is expected that the applicant will provide a thoroughly researched baseline (baseline research is the collection and presentation of data to give a clear picture of a particular situation as it relates to the following: what/who/where/when/why/how).

Suitably qualified practitioners may have the following skills, experience or qualifications:

- Have social science training and or extensive experience in the field of community needs analysis and community consultation;
- Have experience in the use of rigorous social science methodologies with a degree of public involvement;
- Are familiar with the types of information required; and
- May work in a range of fields including town planning and social planning.

6.4 Trigger Criteria

Whilst some applications may fit the description of a SIC Council may request a SIA due to the nature or scale of the development proposal.

6.5 SIC/SIA – Criteria Tables

The criteria tables below are intended as a guide only and the applicant should liaise with Council's Statutory Planning if the requirements of the SIC or SIA are not clear.

A SIC assessment may sometimes require greater analysis via a SIA due to the nature and complexity of the site, its use or scale. Please liaise with Council's Statutory Planning for further advice.

Uses that would typically require a Social Impact Comment (SIC)	
Type of Use	Criteria
Child Care Centres	Up to 59 places
Aged Care Centre/Residential Care Facility/Supported Residential Care Services	20 units or less
Retirement Village	Up to 59 units
Educational Facilities (non-government)	Any
Community Facilities (neighbourhood house, community health/medical clinic/centre/consulting rooms etc.)	Any
Medical Consulting Facilities (health/medical	More than 5 medical practitioners

Policy Reference No: CP2014-07-01	Date of Adoption: 28 July 2014
Review Date: July 2015	Responsible Officer: Manager Social Development
	Department: Social Development
Page 8 of 19	

Social Impact Assessment Planning Policy and Guidelines

clinic/centre/consulting rooms etc.)	
Hostels (transitional, permanent, refuges, crisis accommodation)	Any
Multi-Unit Housing	Between 10 and 59 dwellings
Place of Assembly/Public Worship	200 persons or less
Community Facilities (youth centres, skate parks)	Any
Recreational Facilities/Social Facilities/Place of Assembly	200 persons or less
Brothels	Any

Uses that would typically require a Social Impact Assessment (SIA)	
Type of Use	Criteria
Child Care Centres	60 children's places or greater (new or extension)
Aged Care Centre/Residential Care Facility	21 Units or greater (new or extension)
Retirement Village	60 units or more
Hotels/Taverns and Registered Clubs	Any
Multi-Unit Housing (multi-storey)	60 dwellings or more
Place of Assembly/Public Worship	200 persons or greater
Recreational Facilities/Social Facilities/Place of Assembly	200 persons or greater
Drug Rehabilitation/Counselling Services	Any
Establishment of a new Major Health Service Facility/Hospital	Any
Displacement of affordable, permanent or short term residential accommodation	Any
Subdivision of land for residential purpose which are not included in, or part, of a Council DCP or Section 173 Agreement	60 lots or greater
Out of sequence community infrastructure development in growth area subdivisions	Any
Rezoning of PPRZ	Any
Increasing the bulk or intensification of facilities on land zoned PPRZ (e.g. construction of an additional sports/recreation pavilion or leisure facility can result in a significant number of people and vehicle traffic being generated for extended periods of times)	Capacity for 100 persons or greater
Rezoning from industrial to residential use	60 dwellings or greater

7. POLICY IMPLEMENTATION

7.1 At the pre-application period applicants are encouraged to liaise with Council Statutory Planning Officers to discuss whether a SIC or SIA will be required. Council reserves the right to request a SIC and SIA if it determines it is necessary.

The completion of either form of assessment will ensure that the prospective planning application will provide the optimum amount of information ensuring the application will be submitted in its best possible form in addition to limiting the need for further requests for information from Council.

The primary objective of the pre-application process is for the developer to consider and respond to the potential social impacts identified during the assessment stage of the proposed development.

8. ANALYSIS AND RESPONSE TO SOCIAL IMPACTS

Policy Reference No: CP2014-07-01	Date of Adoption: 28 July 2014
Review Date: July 2015	Responsible Officer: Manager Social Development
	Department: Social Development
Page 9 of 19	

Social Impact Assessment Planning Policy and Guidelines

- 8.1 The applicant is responsible for the analysis of all data that is available from a wide range of sources including, but not limited to, demographic and socio-economic profiles which can be accessed via the Australian Bureau of Statistics, Hume City Social Profile and Suburb/Rural Area Profiles.

This section should also summarise the research, and importantly it should critically evaluate the:

- Key social impacts (positive and negative) as identified from the research.
- Identify and describe the level of positive and negative impact of the proposed development upon how people live, work and interact with each other in addition to existing local community infrastructure.
- Overall net benefit to the community.
- Identify the community benefit/s from the development to the community in relation to their health and wellbeing, local community infrastructure and contribution to the neighbourhood's overall liveability.
- Potential options for managing the impacts of the proposal.
- Identify what measures have been taken to mitigate the impact of the proposed development on the existing community including residents and visitors, facilities and infrastructure.

In essence, the proposal should demonstrate an overall net benefit to the local area of community interest.

9. HUME CITY COUNCIL POPULATION PROFILE

- 9.1 Applicants are encouraged to refer to Hume's City Social Profile and a range of other references referred to in 'Section - Related Documents' to ensure that reliability, accuracy and consistency in providing a picture of the community and assessing the potential impacts of any changes.

The Hume City Social Profile and Suburb/Rural Area Profiles provides an outline of the demographic features of Hume City and its Suburbs/Rural Areas using data from the Australian Bureau of Statistics Census of Population and Housing from 1991, 1996, 2001, 2006 and 2011.

Further information can be obtained from

http://www.hume.vic.gov.au/About_Us/Our_City/City_Statistics

10. SOCIAL IMPACT ASSESSMENT PLANNING POLICY AND GUIDELINES - CHECKLIST

- 10.1 The following list² of items has been developed to guide the assessment process. The checklist will apply at both the SIC or SIA stage.

Please note that the SIA stage will require a far more detailed response in comparison to the SIC response.

10.2 SIC Response

Policy Reference No: CP2014-07-01	Date of Adoption: 28 July 2014
Review Date: July 2015	Responsible Officer: Manager Social Development
	Department: Social Development
Page 10 of 19	

Social Impact Assessment Planning Policy and Guidelines

This is an initial and basic assessment that must provide sufficient information for Council to make a decision. This assessment should not require specialist technical assistance to complete, although in some instances this may be preferable.

10.3 SIA Response

This is an in-depth (comprehensive) assessment about the actual and potential social impacts and it should be undertaken by a suitably qualified professional.

Items for consideration	Issues – Applicant to respond to each issue
<p>Description of the Development</p>	<ul style="list-style-type: none"> • What type of housing is proposed for this development? • How many dwellings are being proposed? • Provide details of dwelling sizes/ number of bedrooms/star rating of individual dwellings • How will it offer greater or lesser choice in housing? • What is the target demographic that is likely to live in this new housing (e.g. age groups, family types, students, educational/income status etc. ...)? • What are the likely numbers of people that will live in this housing development? <p>If the proposal is not a residential development:</p> <ul style="list-style-type: none"> • What type of structure/facility is proposed for this development (e.g. sports pavilion/stadium, place of worship, aged care facility, child care facility etc.)? • Details of dimensions, its scale in comparison to its surrounds • What is the target demographic that is likely to use this in this structure/facility (e.g. age groups, family types, students, educational/income status etc. ...)? • What are the likely numbers of people that will use this in this structure/facility on a daily/weekly basis?
<p>Affordable Housing</p>	<ul style="list-style-type: none"> • How will opportunities for the provision of affordable housing and/or community housing be explored? • How will affordable/community housing be managed? • Have Environmentally Sustainable Design and Development (ESD) considerations been included to achieve cost effective use of the development over time for occupants and minimise resource use?
<p>The Proposed Development In Relation To The Neighbouring Area</p>	<ul style="list-style-type: none"> • What are the key demographic and economic characteristics of the surrounding neighbourhood: <ul style="list-style-type: none"> ○ Population ○ Age ○ Ethnic make up ○ Educational background ○ Socio-economic status (e.g. income, employment, housing) • How is the development going to integrate with the existing neighbourhood (e.g. connectedness, shared pathways, and open space)? • How accessible is the development to existing services/facilities (e.g. wheelchair access, pedestrian, public transport)? • What community services and facilities are available within the neighbourhood – i.e. within 400 metres radius

Policy Reference No: CP2014-07-01	Date of Adoption: 28 July 2014
Review Date: July 2015	Responsible Officer: Manager Social Development
	Department: Social Development
Page 11 of 19	

Social Impact Assessment Planning Policy and Guidelines

	<p>or 5-10 minutes walking distance (e.g. child care centre, kindergartens, schools, health care, access to adequate supply of healthy food, shops, public transport, parks, playgrounds shared pathways etc.)?</p> <ul style="list-style-type: none"> • What recreation facilities are available within the neighbourhood? (e.g. sporting clubs, reserve, and recreation centre)? • How will the design make the development liveable for everyone regardless of age, family needs, or the changes a person may experience during their lifetime?
<p>Public Transport</p>	<ul style="list-style-type: none"> • What public transport is available within a 500 metres radius of the development? • How accessible is public transport to the proposed development? • What are the plans to incorporate public transport into the proposed development (if applicable)?
<p>Active Transport</p>	<ul style="list-style-type: none"> • How accessible is the development to shared pathways for community and/or recreational cycling? • What number of secure undercover bicycle parking is available for occupants and visitors? • Please indicate the provision of accessible showers/lockers in relation to bicycle parking
<p>Safer Design Principles And Crime Prevention Through Environmental Design (CPTED)</p>	<p>Council recognises that the incorporation of good design principles from the outset in the design process has long term benefits to both the developer and the local community. The inclusion of Safer Design and Crime Prevention Through Environmental Design (CPTED) principles into the Social Impact Assessment Guidelines provides guidance on how to include improved community safety measures into development proposals.</p> <p>Elements of Safer Design:</p> <ul style="list-style-type: none"> • Surveillance and sightlines • Safe Movement and Access • Overall Design and Legibility • Clear definition of ownership/boundaries • Activity Mix and Generation • Concealment Reduction <p>Physical Features:</p> <ul style="list-style-type: none"> • Building Design • Integrated and Energy Efficient Lighting • Appropriate Signage and Symbolism • Landscaping/Fencing • Appropriate Streetscape <p>The theory behind CPTED is that the design of a physical environment can produce behavioural effects that will reduce both the incidence and fear of crime. These behavioural effects can be accomplished by reducing the susceptibility of the environment to support criminal behaviour.</p> <p>The three basic strategies in CPTED:</p> <ul style="list-style-type: none"> • Natural access control • Natural surveillance • Territorial reinforcement.
<p>Environmentally Sustainable Design And Development Principles</p>	<p>Council is committed to building with consideration of the natural environment and resource efficiency. Please indicate how the proposed development:</p> <ul style="list-style-type: none"> • optimises passive solar design and natural ventilation

<p>Policy Reference No: CP2014-07-01</p>	<p>Date of Adoption: 28 July 2014</p>
<p>Review Date: July 2015</p>	<p>Responsible Officer: Manager Social Development</p>
	<p>Department: Social Development</p>
<p>Page 12 of 19</p>	

Social Impact Assessment Planning Policy and Guidelines

	<ul style="list-style-type: none"> • designs with an understanding and relationship to the natural landscape and local plant and animal communities, where appropriate • designs for low carbon and resource efficiency including incorporation of renewable energy, solar or efficient hot water systems; efficient heating, ventilation, air conditioning and cooling; access to clothes lines • designs for reduced water consumption and waterway protection • designs for increased recycling and organics re-use and reduced waste generation • design with sustainable products and materials in mind
<p>Design For Future Climatic Conditions (Climate Change Adaptation)</p>	<p>Council supports and encourages developments that design for future climatic conditions including more severe heatwaves, extreme storm events and flash flooding. Please indicate how the development incorporates any of the following:</p> <ul style="list-style-type: none"> • pale coloured pavements and surfaces to reduce the heat island affect • appropriate landscaping including tree canopies for shading, green roofs or walls etc. • porous surfaces and/or water sensitive urban design features to support landscaping and reduce run-off to the storm water system • passive solar design and use of eaves and other shading mechanisms • robust external fittings that can withstand extreme weather
<p>Supportive Environments For Physical Activity Principles</p>	<p>Council supports the Supportive Environments for Physical Activity (SEPA) principles developed by the Heart Foundation (2004)³ which provide optimal design approaches that encourage active living in the areas of:</p> <ul style="list-style-type: none"> • Walking and cycling routes • Streets • Local destinations • Open space • Public transport • Seating, signage, lighting, fencing and walls • Fostering community spirit <p>In summary, SEPA principles encourage the creation of environments that facilitate physical activity, choice and opportunities.</p> <p>Please indicate how the development addresses these objectives.</p>
<p>Culture And Community Values</p>	<p>Please indicate how the development may:</p> <ul style="list-style-type: none"> • Alter or affect cultural or religious values? • Enhance or detract from the existing cultural heritage of the locality. • Encourage acceptance of diversity of cultures and multiculturalism. • Enhance or detract from the cultural life of the community.
<p>What Is Being Proposed In Terms Of Facilities</p>	<ul style="list-style-type: none"> • What recreation facilities are (if any) proposed for the new development? • How will these recreation facilities follow ESD guidelines or include ESD features? • What is the likely population change as a result of the new development? • Will the development generate demand for increased community services and facilities such as child care,

Policy Reference No: CP2014-07-01	Date of Adoption: 28 July 2014
Review Date: July 2015	Responsible Officer: Manager Social Development
	Department: Social Development
Page 13 of 19	

Social Impact Assessment Planning Policy and Guidelines

	preschools, schools, health care, retail stores, public transport, parks and playgrounds etc.?
What Open Space Is Being Proposed For The Development?	<ul style="list-style-type: none"> • What type of open space is being proposed for the development – please specify for private, communal and public open space components? • How will the open space provide facilities for active transport options? • How will the open space/design of the development allow for food growing opportunities?
Economic Effects	<ul style="list-style-type: none"> • What are the positive/negative economic effects of the development? • Will the proposal be likely to give rise to an increase or decrease in employment opportunities in the locality?
Proposed Approach For Community Engagement/Consultation	<ul style="list-style-type: none"> • What mechanisms will you use to involve the surrounding/neighbouring community in understanding the proposed development? • How will you provide information about the proposed development to the community?

11. COUNCIL POLICY CONTEXT

11.1 2013 – 2017 Council Plan

Hume City Council is committed to working with the community to achieve the shared vision and aspirations outlined in the Hume City Plan 2030. The four themes that underpin the Hume City Plan also form the four strategic objectives of the 2013 – 2017 Council Plan. The four themes are:

Council Leadership

Hume City Council demonstrates strong leadership through fostering accountability, developing partnerships in the community with residents and business, and maintaining active relationships with all levels of Government to achieve improved outcomes for the Hume community.

Prosperity of the City

Hume will be a strong, diversified thriving business centre of northern Melbourne. This can be achieved by the provision of effective infrastructure networks, attracting significant and emerging industries, promoting business investment, whilst supporting existing industries and enabling residents to take up a range of employment opportunities.

Community Wellbeing

Hume will be characterised as a strong and cohesive community where residents have equitable access to services and are supported to take up opportunities to actively participate in community life and realise their full potential.

Appearance of the City and Environment

Policy Reference No: CP2014-07-01	Date of Adoption: 28 July 2014
Review Date: July 2015	Responsible Officer: Manager Social Development
	Department: Social Development
Page 14 of 19	

Social Impact Assessment Planning Policy and Guidelines

Hume City Council endeavours to enhance community pride by resourcing services to deliver a clean appearance of the City, with appropriately maintained infrastructure and a well preserved and protected natural environment.

Council acknowledges that developments can have both positive and negative impact upon how people live, work and interact with each other, their culture, community and environment and potentially have detrimental effect on the health and wellbeing of our lives, now and into the future.

The implementation of the Social Impact Assessment Planning Policy and Guidelines (SIAPPG) is a demonstration of Council's commitment to ensuring all residents have access to appropriate services. Council is committed to ensuring that social issues are considered as an integral part of any proposed development.

The SIAPPG compliments Council's Municipal Strategic Statement (MSS) and should be read in conjunction with this vision for the future use and development of land in Hume.

11.2 Municipal Strategic Statement

The Municipal Strategic Statement's vision for Hume City is as follows:

Hume City Council will recognise, enhance and plan for a community which:

- Is diverse, prosperous, safe and respectful of our heritage and environment;
- Provides a range of education and employment opportunities; and
- Works in partnership to achieve the long term sustainability of quality urban and rural lifestyle choices.

The Municipal Strategic Statement which links and integrates the above elements provides the objectives and strategies for land use planning within the municipality focussing on the following key areas:

- Community Wellbeing inclusive of open space, recreation, health and community facilities;
- The Economy inclusive of employment, airports, retailing and institutions;
- Infrastructure inclusive of public transport, roads, cycling and walking linkages;
- Environment inclusive of both; the built environment encompassing character, environmentally sustainable design and development, urban design, heritage and signage; and, the natural environment encompassing floodplains, water catchment areas and native vegetation;
- Local Areas inclusive of, Broadmeadows, Meadow Heights, Craigieburn, Roxburgh Park, Dallas, Coolaroo, Campbellfield, Gladstone Park, Tullamarine, Greenvale, Attwood, Westmeadows Neighbourhood, Rural Areas, Somerton Sunbury and Activity Centres; and
- Particular Use and Development including Built Form and Gaming.

11.3 Hume Planning Scheme

Policy Reference No: CP2014-07-01	Date of Adoption: 28 July 2014
Review Date: July 2015	Responsible Officer: Manager Social Development
	Department: Social Development
Page 15 of 19	

Social Impact Assessment Planning Policy and Guidelines

The Hume Planning Scheme sets out policies and requirements for the use, development and protection of land.

In essence, the Hume Planning Scheme provides a local context in the promotion of 'liveable settlements and healthy communities' and 'integrated decision making' however it does not provide in relevant detail the criteria required for assessing social impacts of land use and development in a comprehensive and consistent manner.

Specifically, the purpose of the Hume Planning Scheme is to:

- Provide a clear and consistent framework within which decisions about the use and development of land can be made;
- Express state, regional, local and community expectations for areas and land uses; and
- Provide for the implementation of State, regional and local policies affecting land use and development.

The SIAPPG will assist to identify, consider and address the potential positive and negative social impacts of land use and development.

This policy seeks to provide additional detail to the Hume Planning Scheme to assist in the consideration and assessment of social impacts that may occur as a result of a proposed development.

11.4 Hume Health and Wellbeing Plan

Under the Public Health and Wellbeing Act 2008, Council is responsible for creating an environment which supports the health of the community and strengthens the capacity of people to achieve better health. The Hume City Council Health and Wellbeing Plan 2013-17 outlines how Council will work alongside its partners to promote and protect the health and wellbeing of everyone who lives, works, learns and plays in Hume City.

Consistent with the holistic and integrated approach to social impact assessment, the Health and Wellbeing Plan 2013-17 recognises that health and wellbeing is influenced by the built, social, natural and economic environments that people live in.

The plan outlines four strategic directions for health and wellbeing including:

- **Built Environment:** create a built environment that encourages healthy and active living and is sustainable and safe
- **Social Environment:** create a vibrant and inclusive social environment that values people in all their diversity
- **Natural Environment:** protect and enhance the natural environment for the use, wellbeing and enjoyment of current and future generations
- **Economic Environment:** create an economic and learning environment that supports people to realise their full potential

In using the 'environments for health' framework, Council acknowledges that everything that Council does shape the health and wellbeing of the community. It also provides the opportunity for Council to improve the health and wellbeing of the Hume City population through addressing the

Policy Reference No: CP2014-07-01	Date of Adoption: 28 July 2014
Review Date: July 2015	Responsible Officer: Manager Social Development
	Department: Social Development
Page 16 of 19	

Social Impact Assessment Planning Policy and Guidelines

determinants of health – those factors that influence health but remain outside the realm of the health sector.

11.5 Hume Horizons 2040

Hume Horizons 2040 outlines the long-term vision for Hume City and is the foundation for Hume City Council's corporate planning framework. It describes the type of community we want and the Council Plan and related strategies, actions plans and services plans provide the details on what Council will be doing to achieve it.

The Council Plan guides Council's response to Hume Horizons 2040 and ensures that Council is doing its part in supporting the community's aspirations and dreams for the City and making these a reality.

The Council Plan includes targeted strategies and actions that are directly linked to achieving the aspirations and community expectations in Hume Horizons 2040.

Hume Horizons 2040 is underpinned by five key themes where Hume is a:

- city that is committed to lifelong learning by providing access to education, no matter what stage of life;
- healthy, safe and welcoming community where all residents are encouraged to live active and fulfilling lives;
- city of great cultural diversity and a leading example of how people can work together to celebrate what makes them different and foster a sense of belonging for all;
- thoughtful planning, innovative design and timely and sustainable provision of physical and social infrastructure are central in developments across Hume City; and
- the community is well-informed and engaged in decision making, helping to create a community that is highly engaged and well connected.

12. LEGISLATIVE CONTEXT

12.1 Although the SIAPPG is not a statutory document it is a guideline to assist Council and applicants make consistent decisions as well as provide relevant and appropriate information for decision making. SIAPPG underpins better planning outcomes for communities in Hume City as it ensures that all impacts of a development have been considered, and it assists the understanding and assessment of social issues.

SIAPPG introduces a checklist to guide the assessment process enabling Council Officers via a set of measurements and criteria to enhance and complement Sections 4, 12, 60 of the Planning and Environment Act 1987.

The Planning and Environment Act 1987 states that:

Section 4

The objectives of the planning framework ... are:

Policy Reference No: CP2014-07-01	Date of Adoption: 28 July 2014
Review Date: July 2015	Responsible Officer: Manager Social Development
	Department: Social Development
Page 17 of 19	

Social Impact Assessment Planning Policy and Guidelines

- (2) (c) *to enable land use and development planning and policy to be easily integrated with environmental, social, economic, conservation and resource management policies at State, Regional and Municipal level;*
- (2) (d) *to ensure that the effects on the environment are considered and provide for explicit consideration of social and economic effects when decisions are made about the use and development of land*

Section 12

In preparing a planning scheme or amendment, a planning authority:

- (2) (c) *may take into account its social effects and economic effects.*

Section 60

...before deciding on an application, the responsible authority must consider:

- (1) (e) *any significant effects which the responsible authority considers the use or development may have on the environment of which the responsible authority considers the environment may have on the use or development.*
- (1A) (a) *any significant social and economic effects of the use or development for which the applications is made'*

The aim of the SIAPPG is to provide a planning assessment framework (including checklist tool) for Council and prospective applicants that can be applied in a uniform and consistent manner.

The policy will provide some guidance in the assessment of development proposals in regard to determining any social impact and how to accommodate such impacts.

12.2 Local Government Act 1989

SIAPPG is consistent with the Local Government Act 1989 in regards to Council endeavouring to achieve the best outcomes for its residents.

Local Government Act 1989 - SECT 3C

- (1) *The primary objective of a Council is to endeavour to achieve the best outcomes for the local community having regard to the long term and cumulative effects of decisions.*
- (2) *In seeking to achieve its primary objective, a Council must have regard to the following facilitating objectives:*
- (a) *To promote the social, economic and environmental viability and sustainability of the municipal district;*
 - (b) *To ensure that resources are used efficiently and effectively and services are provided in accordance with the Best Value Principles to best meet the needs of the local community;*
 - (c) *To improve the overall quality of life of people in the local community;*
 - (d) *To promote appropriate business and employment opportunities;*
 - (e) *To ensure that services and facilities provided by the Council are accessible and equitable;*
 - (f) *To ensure the equitable imposition of rates and charges;*

Policy Reference No: CP2014-07-01	Date of Adoption: 28 July 2014
Review Date: July 2015	Responsible Officer: Manager Social Development
	Department: Social Development
Page 18 of 19	

Social Impact Assessment Planning Policy and Guidelines

(g) To ensure transparency and accountability in Council decision making.

13. REREFENCES

1. See Alison Ziller, the new/social impact assessment handbook, Mosman, Australia Street Company, pp. xiv Definitions 2012
2. Maribyrnong City Council: Social Impact Assessment for Significant Residential Developments – Policy and Guidelines 2002
3. Healthy By Design, National Heart Foundation (Victorian Division) 2004

14. RELATED DOCUMENTS

Hume City Council

- Hume Planning Scheme (August 2013)
- Council Plan 2009–2013
- Health and Wellbeing Plan 2013–2017
- Pathways to Sustainability: An Environmental Framework 2009-2013
- Climate Change Adaption Plan

Maribyrnong City Council

- Social Impact Assessment for Significant Residential Developments: Policy and Guidelines (2002)

East Gippsland Shire Council

- Social Impact Assessment for Development Applications (2013)

Policy Reference No: CP2014-07-01	Date of Adoption: 28 July 2014
Review Date: July 2015	Responsible Officer: Manager Social Development
	Department: Social Development
Page 19 of 19	