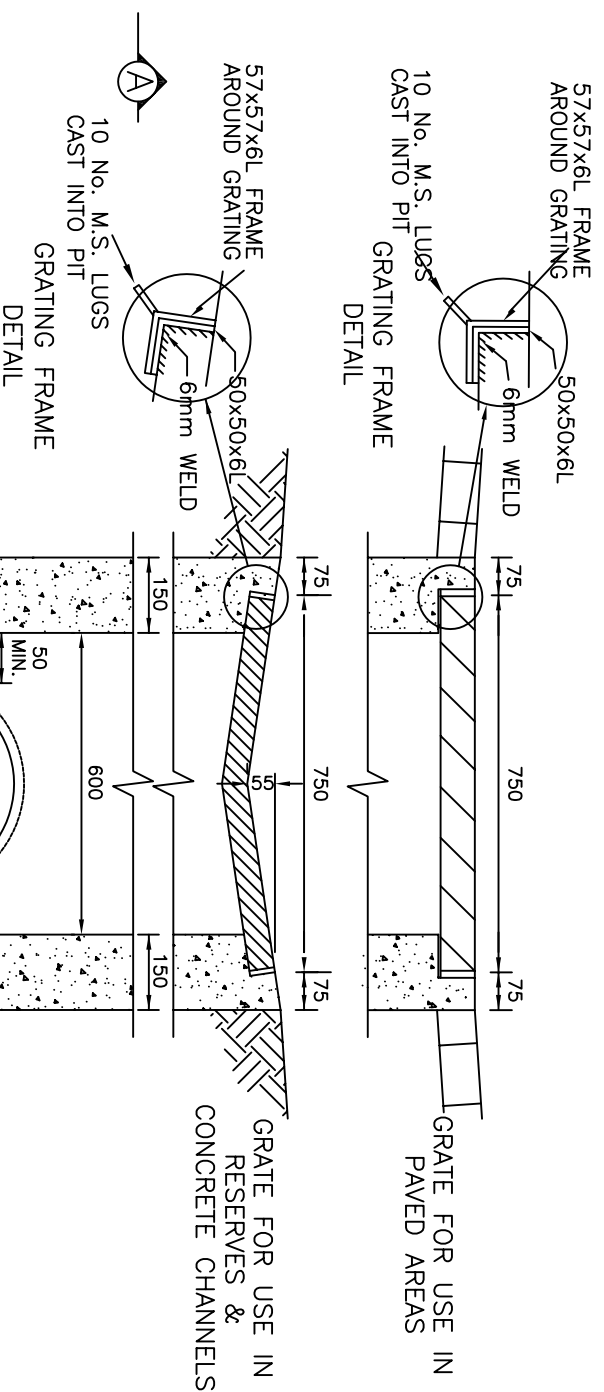


NOTES:

1. GRATE SHALL BE "BIKE SAFE" AND MADE TO SAME SHAPE AS OPEN CHANNEL.
2. GRATE TO BE CLASS D AS PER A.S. 3996.
3. GRATE TO BE HOT DIPPED GALVANIZED STEEL OR CAST IRON.
4. STEP IRONS TO BE PROVIDED IN PITS OVER 1m DEEP. REFER TO STD. DWG. SD280.
5. THE TOP OF THE PIT SHALL MATCH THE NATURE STRIP CROSSFALL.
6. CONCRETE TO BE 25MPa AT 28 DAYS.
7. PIT TO BE HAUNCHED FOR PIPE DIAMETERS GREATER THAN 450mm OR DEEPER THAN 2.0m REFER TO STD. DWG. SD245.
8. IN RESERVES WHERE AN APRON IS REQUIRED AND OPEN EARTH CHANNELS PROVIDE A 150 THICK X 450mm WIDE CONCRETE APRON WITH 150 MAXIMUM DROP TO TOP OF GRATE.



SECTION A-A

Amendments

No.	Detail	Initials	Date
A			

DRAWN : D. SALAZAR
 CHECKED : R. DEVAPURA
 APPROVED : S. PLATER
 SCALE : N.T.S.
 ISSUE DATE: JUNE 2004



P.O. Box 119
 1079 Pascoe Vale Road
 Broadmeadows
 Victoria 3047
 Telephone
 (03) 9205 2200
 Facsimile
 (03) 9309 0109

TYPE :

GRADED PIT IN RESERVES,
 CHANNELS AND PAVED AREAS

DRAWING NO.:

SD2225