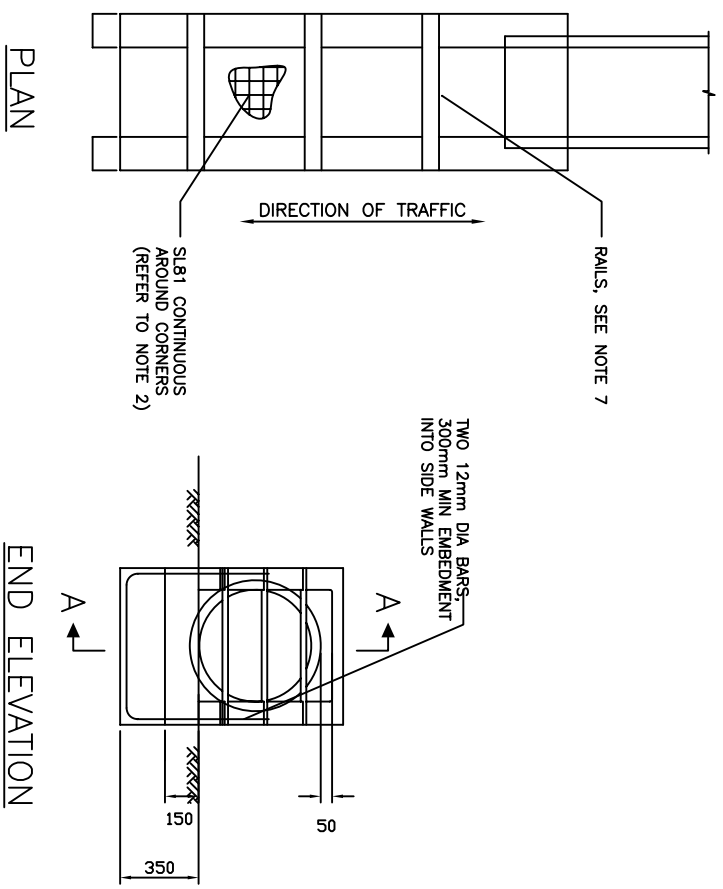


SECTION A-A



PLAN

END ELEVATION

NOTES:

1. THESE ENDWALLS ARE TO BE USED IN AREAS WHERE HEAD ON COLLISIONS ARE LIKELY TO OCCUR.
2. REINFORCEMENT, SL81 UNLESS OTHERWISE SPECIFIED, TO BE CONTINUOUS AROUND CORNERS AND LOCATED AS SHOWN. CLEAR COVER 50mm. MIN. LAPS: FABRIC 300mm. MIN. BARS 25mm X BAR DIA. MIN. DISTRIBUTION BARS 12mm DIA AT 200 CENTRES. CONCRETE STRENGTH 32Mpa AT 28 DAYS. EXPOSED EDGES TO HAVE 20 X 20mm CHAMFERS.
3. RAILS WITHIN LENGTH 'L' SHALL BE EVENLY SPACED. THE MAXIMUM SPACING SHALL NOT EXCEED 600mm.
4. RAILS ARE 60mm DIA GALVANISED TUBES 5.4mm THICK. THESE ARE TO BE GROUTED INTO THE SLOTS IN THE WALLS.
5. SLOPE OF ENDWALL TO MATCH BATTER SLOPE. MAXIMUM SLOPE 4 TO 1.
6. ENDWALLS TO BE CONSTRUCTED IN ACCORDANCE WITH THE RELEVANT PROVISIONS OF OF AS.3600.
7. ALL DIMENSIONS IN MILLIMETRES

L (mm)	TOTAL NUMBER OF RAILS
100	600
601	1200
1201	1800
1801	2400
	1
	2
	3
	4

Amendments			
No.	Detail	Initials	Date
1.	Mesh Codes Changed	R.C.	July 06

DRAWN : R. CHARTERS  
 CHECKED : R. DEVAPURA  
 APPROVED : S. PLATER  
 SCALE : N.T.S.  
 ISSUE DATE: JUNE 2004



PO Box 119  
 1079 Pascoe Vale Road  
 Broadmeadows  
 Victoria 3047  
 Telephone  
 (03) 9250 2200  
 Facsimile  
 (03) 9309 0109

TYPE : DRIVEABLE CULVERT ENDWALL  
 PIPE CULVERTS UP TO 600mm DIA  
 & BOX CULVERTS UP TO 600mm WIDE  
 DRAWING NO: SD268