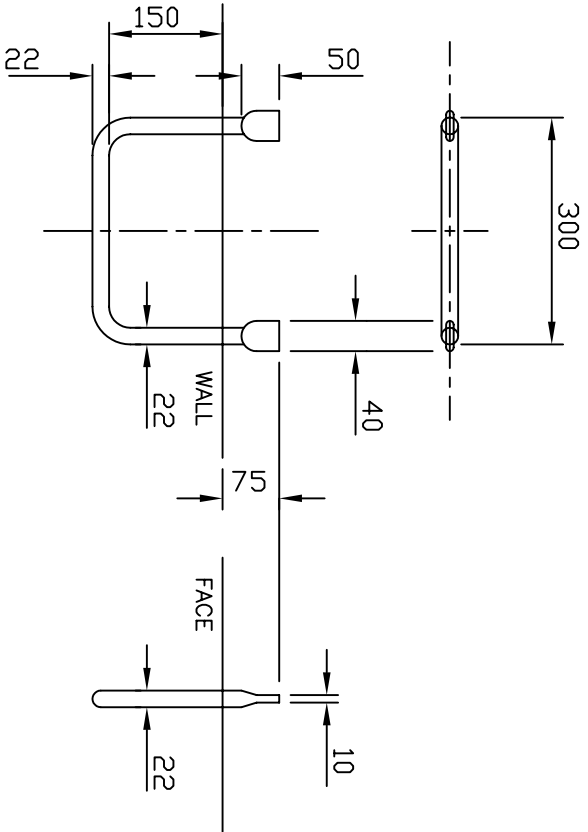
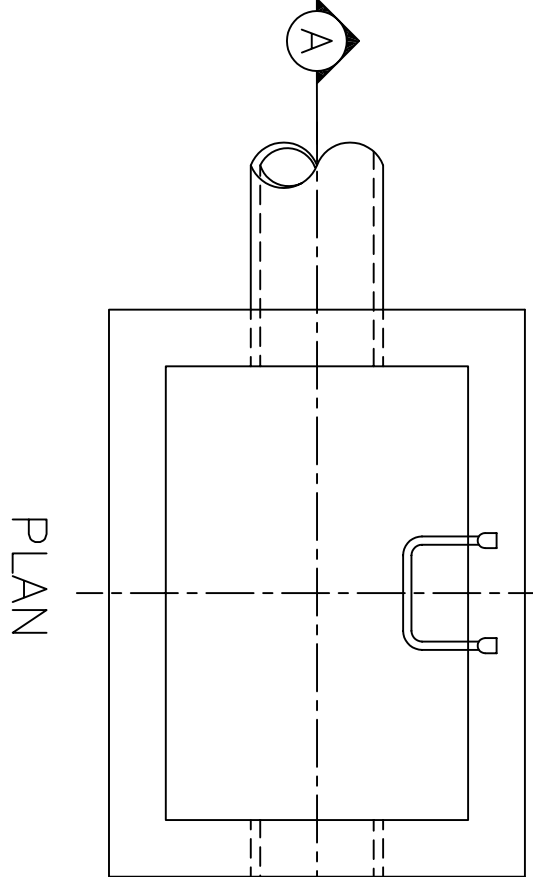


SECTION A-A



STEP IRON DETAILS

SCALE 1 : 10



PLAN

NOTES :

1. STEP IRONS TO BE 22mm DIA. MILD STEEL BARS GALVANIZED OR TREATED WITH APPROVED ZINC ON SILICATE PROCESS.
2. PITS DEEPER THAN 1000mm TO BE FITTED WITH STEP IRONS.
3. STEP IRONS TO BE SPACED AT 300mm CRS. WITH LOWEST STEP IRON NOT MORE THAN 450mm ABOVE PIT FLOOR.
4. STEP IRONS TO BE PLACED IN WALL WHICH IS CLEAR OF OPENING.
5. FIRST STEP TO BE 650mm BELOW TOP OF PIT.

Amendments			
No.	Zone	Detail	Date

DRAWN : D. SALAZAR  
 CHECKED : S. BHALLA  
 APPROVED : S. PLATER  
 SCALE : 1 : 20  
 ISSUE DATE: JUNE 2004



PO Box 119  
 1079 Pascoe Vale Road  
 Broadmeadows  
 Victoria 3047  
 Telephone  
 (03) 9205 2200  
 Facsimile  
 (03) 9309 0109

TYPE :	STEP IRONS
DRAWING NO:	SD280