

**BUILDING  
A BETTER  
HUME**



## Progress Reserve Stage One Opening Event Thursday 13 April 2023, 2pm – 4pm

### You are invited to a free afternoon of fun!

We are celebrating the opening of Progress Reserve playspace on **Thursday 13 April 2023 from 2pm–4pm.**

The playspace will be opened by Hume City Mayor Cr Joseph Haweill and State Government officials who will share how this reserve will transform the area for the Coolaroo community.

Join us for an afternoon of fun with face painting, coffee and icecream.

The playspace is the first stage of the Progress Reserve Master Plan works, which provides the Coolaroo community with a range of play equipment for all ages and abilities in a safe and inclusive environment.

Residents can enjoy the new purpose-built play and recreation environment, which includes:

- A scooter track
- A covered picnic and BBQ area
- Nature play area
- A climbing tower
- Tunnel play
- Junior and senior play areas
- Landscaped garden
- Tree planting
- Connected path network
- Irrigated lawn
- Seating and picnic settings
- Public toilets



More information about this project can be found by emailing [projects@hume.vic.gov.au](mailto:projects@hume.vic.gov.au)



**Progress Reserve is located  
at Almurta Avenue, Coolaroo**

This project is being delivered in partnership between Hume City Council and the Victorian Government.



### A reminder of what we are doing...

As part of the Progress Reserve Master Plan, we're carrying out valuable upgrades in stages.

The upgrade aims to improve existing park facilities for the wider Hume community as well as improving the amenity in Coolaroo by providing a community-based environment that focuses on the social, safety and inclusiveness of both active and passive recreation at Progress Reserve. The upgrade will provide a safe and connected open space environment for all ages and abilities so everyone can play.

### Improve Recreational and Open Space Parkland

Providing more defined recreational and social precincts within Progress Reserve with the upgrading of existing playspace, providing new activity areas, fitness station and new family picnic and BBQ areas to reflect the demand for social meetings and outdoor recreation.

### Equitable Play

Progress Reserve will provide a fine example where everyone can play by providing a range of activities and equipment for all ages and abilities in a safe and inclusive environment, to reflect the social and cultural diversity of Coolaroo and Hume wider community.

### Improve Access and Connectivity

Progress Reserve will play a major part in the open space network by linking parklands through a safe and connected cycle and walking network.

A new internal shared use path with lighting will be provided to enable safe access to Coolaroo Station through the reserve.

### Sustainable Design

Environmental sensitivity is central to the improvement at Progress Reserve through the use of recyclable products to ensure the life cycle of materials, furniture and fixtures is environmentally and economically sustainable.

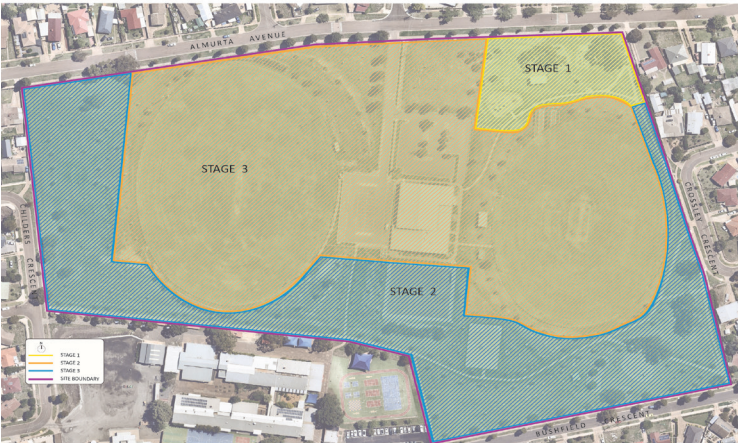
Storm water and road run off will be managed through vegetated swales throughout the reserve.

Selective tree planting species and landscaping will provide extra canopy, shade and microclimate in response to the heat island effect in urban centres and to provide habitat value and encourage biodiversity in the reserve.

### Progress Reserve Master Plan



### Progress Reserve Staging Plan



### Timeline

- 2020  
Progress Reserve Master Plan adopted
- June 2021  
Detailed Design
- April 2022  
Stage One construction commenced
- February 2023  
Stage One construction completed
- April 2023  
Opening of Stage One and new playspace precinct