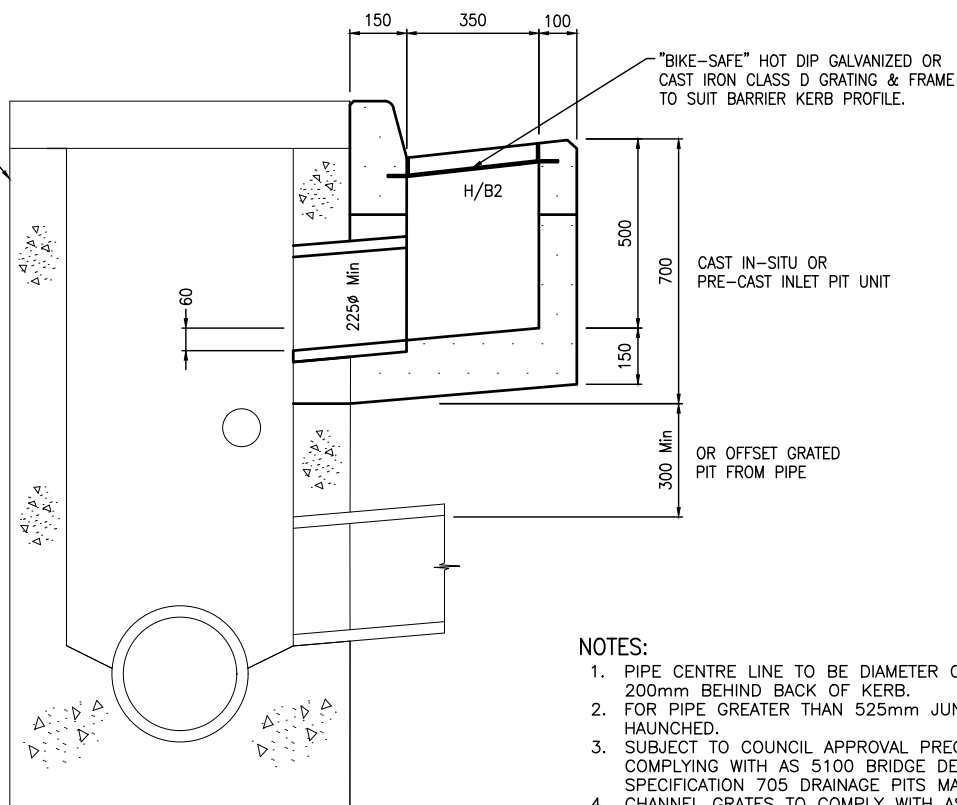


PLAN

REFER TO SD 230, 231, 240 & 241 FOR JUNCTION DETAILS.



SECTION A - A


SINGLE GRATED SIDE ENTRY PIT  
H/B2 KERB & CHANNEL  
N.T.S.

NOTES:

1. PIPE CENTRE LINE TO BE DIAMETER OF PIPE / 2 + 200mm BEHIND BACK OF KERB.
2. FOR PIPE GREATER THAN 525mm JUNCTION PIT TO BE HAUNCHED.
3. SUBJECT TO COUNCIL APPROVAL PRECAST PITS COMPLYING WITH AS 5100 BRIDGE DESIGN AND VICROADS SPECIFICATION 705 DRAINAGE PITS MAY BE USED.
4. CHANNEL GRATES TO COMPLY WITH AS 3996, BE FITTED WITH AN APPROVED LOCKING DEVICE AND HAVE A CLEAR OPENING OF 900mm X 350mm.
5. 225mm DIAMETER SEWER GRADE PVC PIPE WHEN GAP BETWEEN CATCH PIT AND JUNCTION PIT IS LESS THAN 300mm. 225mm DIAMETER REINFORCED CONCRETE PIPE WHEN GAP IS GREATER THAN 300mm.
6. WHEN PIT IS USED WITH 300mm WIDE KERB TRAY-FLARE, KERB TRAY TO MATCH WIDTH OF PIT
7. SHAPE FLOOR OF PIT TO OUTLET & RENDER FLOOR AND WALLS TO CLASS 2 FINISH.
8. CONCRETE STRENGTH 32 MPa AT 28 DAYS.
9. NOT APPLICABLE TO MELBOURNE WATER CORPORATION DRAINAGE ASSETS. FOR MWC WORKS REFER TO MWC LAND DEVELOPMENT MANUAL.

NOT TO SCALE

AMENDMENTS			
DATE	DETAILS	INITIALS	
NOV 2022	INITIAL HUME STANDARDS UPDATE	T.D	



SINGLE GRATED SIDE ENTRY PIT  
H/B2 KERB & CHANNEL

VERSION: A      DRAWING NO: SD210