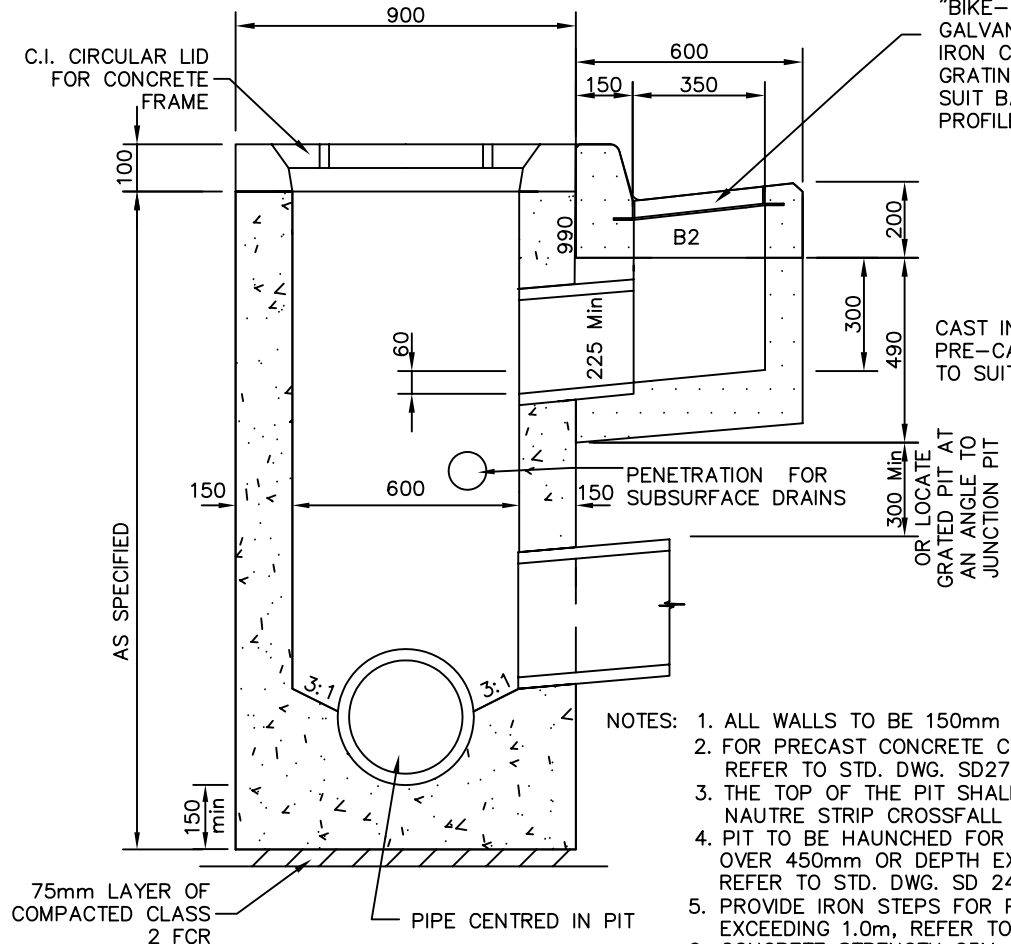
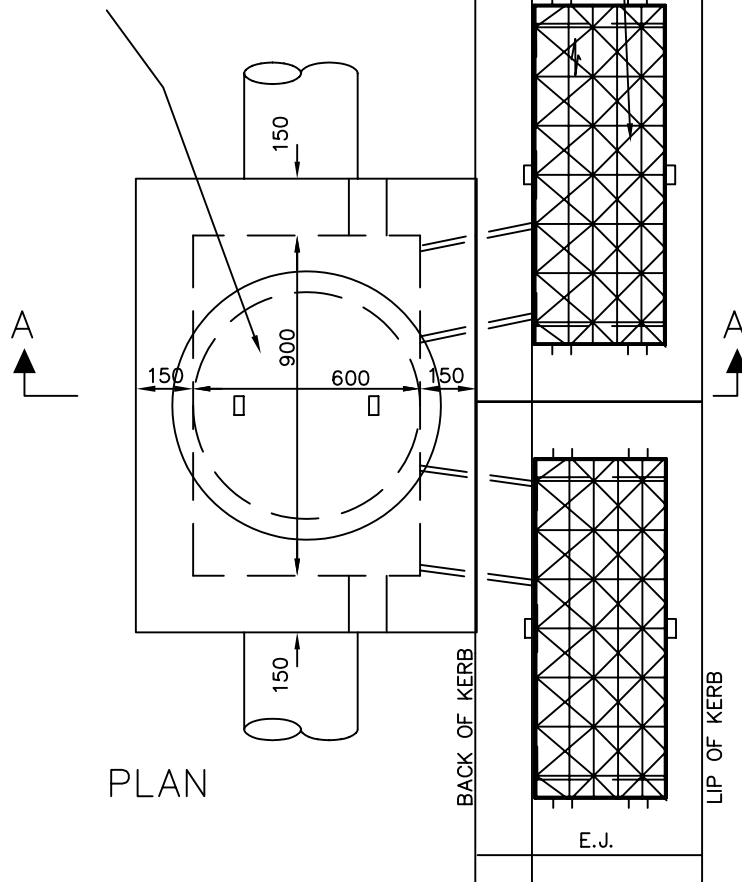


"BIKE-SAFE" HOT DIP GALVANIZED OR CAST IRON CLASS D GRATING & FRAME TO SUIT BARRIER KERB PROFILE.

PRECAST CONCRETE COVER WITH CLASS B CIRCULAR CAST IRON INSERT. PITS WITHIN 1m OF VEHICLE CROSSINGS ARE TO HAVE CLASS D COVER & SURROUND



"BIKE-SAFE" HOT DIP GALVANIZED OR CAST IRON CLASS D GRATING & FRAME TO SUIT BARRIER KERB PROFILE.

CAST IN-SITU OR PRE-CAST UNITS TO SUIT

- NOTES:
1. ALL WALLS TO BE 150mm THICK
  2. FOR PRECAST CONCRETE COVER DETAILS REFER TO STD. DWG. SD275
  3. THE TOP OF THE PIT SHALL MATCH THE NAUTRE STRIP CROSSFALL
  4. PIT TO BE HAUNCHED FOR PIPE DIAMETER OVER 450mm OR DEPTH EXCEEDS 2.0m, REFER TO STD. DWG. SD 245
  5. PROVIDE IRON STEPS FOR PIT DEPTH EXCEEDING 1.0m, REFER TO STD. DWG. SD280
  6. CONCRETE STRENGTH 25Mpa AT 28 DAYS
  7. FOR GRATE DETAIL SEE STD. DWG. SD276
  8. EXPANSION JOINTS TO BE INSTALLED EITHER SIDE OF GRATED PITS WITH 3 No. 450mm LONG R16 BARS GREASED OR SLEEVED ONE END.

Initials	Date

DRAWN : R.CHARTERS  
 CHECKED : J.DAVIS  
 APPROVED : J.DAVIS  
 SCALE : 1:20  
 DATE: NOV 2007



PO Box 119  
 1079 Pascoe Vale Road  
 Broadmeadows  
 Victoria 3047  
 Telephone  
 (03) 9205 2200  
 Facsimile  
 (03) 9309 0109

DOUBLE CHANNEL GRATED PIT  
 B2 KERB & CHANNEL  
 DRAWING NO: SD211