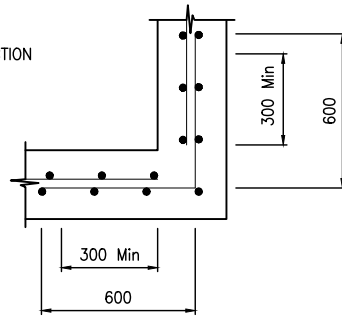
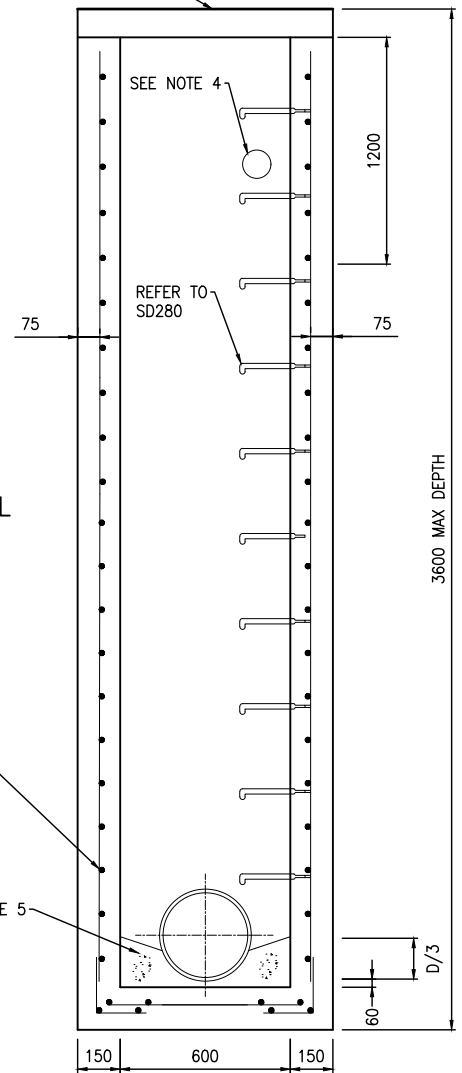


PLAN VIEW



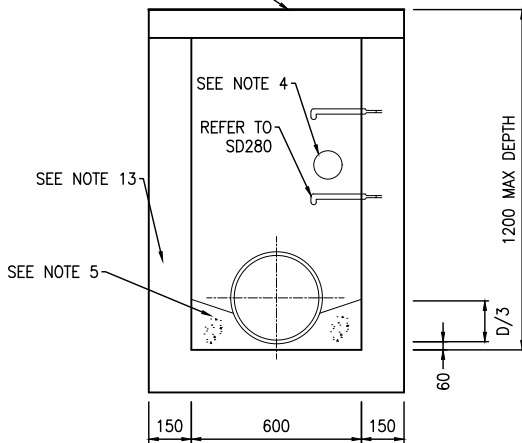
CORNER REINFORCEMENT LAP DETAIL

REFER TO PIT COVER SCHEDULE FOR PIT COVER TYPE



PIT TO 1201 TO 3600 DEPTH SECTION A - A

REFER TO PIT COVER SCHEDULE FOR PIT COVER TYPE



PIT TO 1200 DEPTH SECTION A - A

LOCATION OF PIT	PIT COVER
RESERVES	CLASS B - CONCRETE
EASEMENTS	CLASS B - CONCRETE OR FIBRE GLASS
NATURESTRIPS	CLASS B - CONCRETE OR FIBRE GLASS
WITHIN 0.75M OF A VEHICLE CROSSING	CLASS D - CAST IRON
WITHIN A VEHICLE CROSSING	CLASS D - CAST IRON
ROAD PAVEMENT	CLASS D - CAST IRON

PIT COVER SCHEDULE

900mm X 600mm JUNCTION PIT UP TO 3600mm DEPTH

N.T.S.

NOTES:

1. ALL DIMENSIONS IN MILLIMETRES UNLESS OTHERWISE SHOWN.
2. PIPE CENTRE LINE TO BE DIAMETER OF PIPE / 2 + 200mm BEHIND BACK OF KERB.
3. PIT TO BE HAUNCHED WHERE THE PIPE DIAMETER PLUS 150 IS GREATER THAN THE WIDTH OF THE PIT. REFER TO SD 240 & 241.
4. INSTALL 100mm DIAMETER PENETRATION FOR SUBSURFACE DRAINAGE.
5. FLOOR OF PIT TO BE SHAPED ON COMPLETION OF PIT WITH NO SLUMP CONCRETE.
6. SUBJECT TO COUNCIL APPROVAL PRECAST PITS COMPLYING WITH AS 5100 BRIDGE DESIGN AND VICROADS SPECIFICATION 705 DRAINAGE PITS MAY BE USED.
7. PITS DEEPER THAN 1m TO BE FITTED WITH STEP IRONS AS PER SD280.
8. PIT COVER TO MATCH FINISHED SURFACE LEVEL AND CROSSFALL.
9. PIT COVERS TO BE IMPRINTED WITH THE CLASS OF THE COVER AND WEIGHT.
10. FIBRE GLASS PIT COVERS TO BE FITTED WITH AN APPROVED LOCKING DEVICE AND INSTALLED TO OPEN TO THE VERGE SIDE OF THE ROAD.
11. FIBRE GLASS PIT COVERS TO BE ATTACHED WITH 4 No. - 10mm DIA. 75mm LONG MASONRY ANCHORS OR AS PER MANUFACTURERS DETAILS.
12. FIBRE GLASS PIT COVERS TO HAVE A CLEAR OPENING OF 900mm X 600mm.
13. PITS GREATER THAN 1200 DEPTH TO BE REINFORCED.
14. CONCRETE PIT COVERS TO BE INSTALLED ON A 5mm BED OF MORTAR.
15. FABRIC IN SHAFT TO HAVE MAIN BARS HORIZONTAL.
16. CLEAR COVER TO REINFORCEMENT NOT LESS THAN 50mm.
17. RETURN REINFORCEMENT BARS TO BE FABRIC OR EQUIVALENT BARS.
18. CONCRETE STRENGTH 32 MPa AT 28 DAYS.
19. NOT APPLICABLE TO MELBOURNE WATER CORPORATION DRAINAGE ASSETS. FOR MWC WORKS REFER TO MWC LAND DEVELOPMENT MANUAL.
20. FOR ANY PITS LARGE THAN 900 X 600 ID REFER TO VICROADS STANDARD DRAWING SD1121.

NOT TO SCALE

AMENDMENTS		INITIALS
DATE	DETAILS	T.D
NOV 2022	INITIAL HUME STANDARDS UPDATE	



900mm X 600mm JUNCTION PIT UP TO 3600mm DEPTH

VERSION: A

DRAWING NO:

SD230