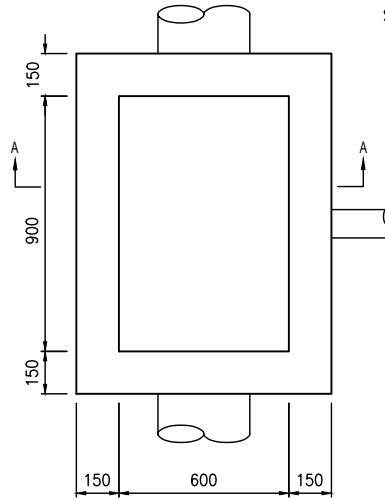
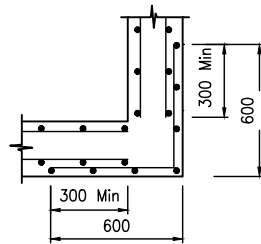


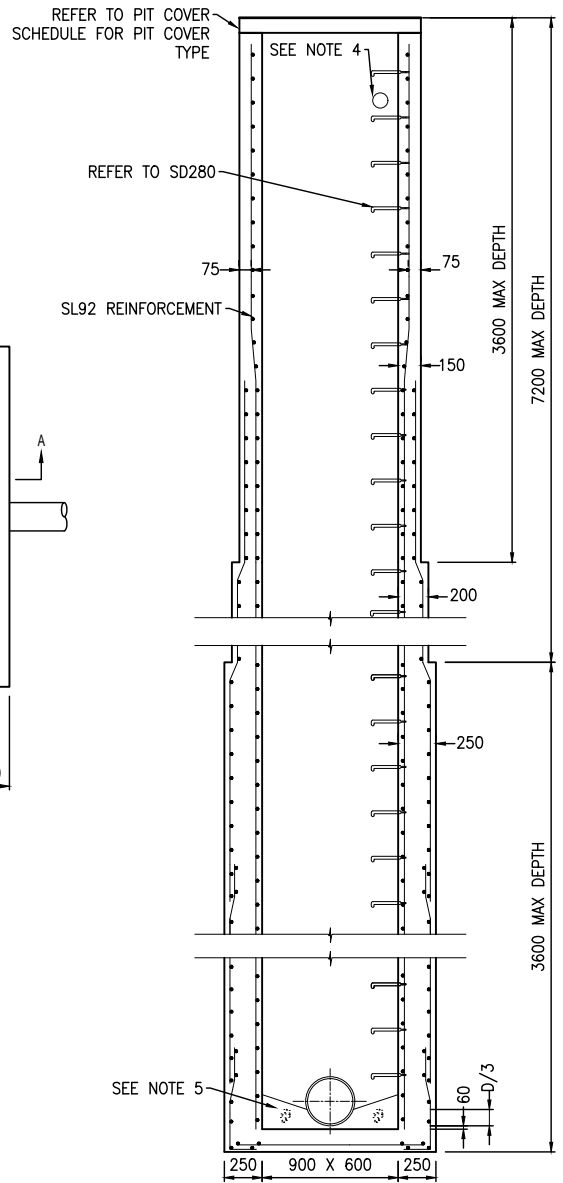
SECTION A - A



PLAN VIEW



CORNER REINFORCEMENT LAP DETAIL



SECTION A - A

LOCATION OF PIT	PIT COVER
RESERVES	CLASS B - CONCRETE
EASEMENTS	CLASS B - CONCRETE OR FIBRE GLASS
NATURESTRIPS	CLASS B - CONCRETE OR FIBRE GLASS
WITHIN 0.75m OF A VEHICLE CROSSING	CLASS D - CAST IRON
WITHIN A VEHICLE CROSSING	CLASS D - CAST IRON
ROAD PAVEMENT	CLASS D - CAST IRON

PIT COVER SCHEDULE

NOTES:

- ALL DIMENSIONS IN MILLIMETRES UNLESS OTHERWISE SHOWN.
- PIPE CENTRE LINE TO BE DIAMETER OF PIPE / 2 + 50mm BEHIND BACK OF KERB.
- PIT TO BE HAUNCHED WHERE THE PIPE DIAMETER PLUS 150 IS GREATER THAN THE WIDTH OF THE PIT. REFER TO SD 240 & 241.
- INSTALL 100mm DIAMETER FAUCET FOR SUBSURFACE DRAINAGE.
- FLOOR OF PIT TO BE SHAPED ON COMPLETION OF PIT WITH NO SLUMP CONCRETE.
- SUBJECT TO COUNCIL APPROVAL PRECAST PITS COMPLYING WITH AS 5100 BRIDGE DESIGN AND VICROADS SPECIFICATION 705 DRAINAGE PITS MAY BE USED.
- PITS TO BE FITTED WITH STEP IRONS AS PER SD280.
- PIT COVER LEVEL TO MATCH FINISHED SURFACE LEVEL.
- PIT COVERS TO BE IMPRINTED WITH THE CLASS OF THE COVER AND WEIGHT.
- FIBRE GLASS PIT COVERS TO BE FITTED WITH AN APPROVED LOCKING DEVICE AND INSTALLED TO OPEN TO THE VERGE SIDE OF THE ROAD.
- FIBRE GLASS PIT COVERS TO BE ATTACHED WITH 4 N^o - 10mm DIA. 75mm LONG MASONRY ANCHORS OR AS PER MANUFACTURERS DETAILS.
- FIBRE GLASS PIT COVERS TO HAVE A CLEAR OPENING OF 900mm X 600mm.
- CONCRETE PIT COVERS TO BE INSTALLED ON A 5mm BED OF MORTAR.
- FABRIC IN SHAFT TO HAVE MAIN BARS HORIZONTAL.
- CLEAR COVER TO REINFORCEMENT NOT LESS THAN 50mm.
- RETURN REINFORCEMENT BARS TO BE FABRIC OR EQUIVALENT BARS.
- CONCRETE STRENGTH 25 MPa AT 28 DAYS.
- NOT APPLICABLE TO MELBOURNE WATER CORPORATION DRAINAGE ASSETS. FOR MWC WORKS REFER TO MWC LAND DEVELOPMENT MANUAL.

900mm X 600mm JUNCTION PIT
3601mm TO 10800mm DEPTH
N.T.S.

NOT TO SCALE

AMENDMENTS		
DATE	DETAILS	INITIALS
NOV 2022	INITIAL HUME STANDARDS UPDATE	T.D



900mm X 600mm JUNCTION PIT
3601mm TO 10800mm DEPTH

VERSION: A

DRAWING NO:

SD231