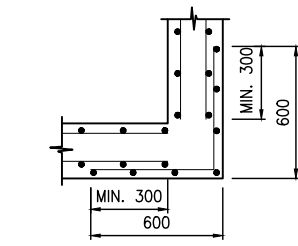


LOCATION OF PIT	PIT COVER
RESERVES	CLASS B – CONCRETE
EASEMENTS	CLASS B – CONCRETE OR FIBRE GLASS
NATURESTRIPS	CLASS B – CONCRETE OR FIBRE GLASS
WITHIN 0.75m OF A VEHICLE CROSSING	CLASS D – CAST IRON
WITHIN A VEHICLE CROSSING	CLASS D – CAST IRON
ROAD PAVEMENT	CLASS D – CAST IRON

PIT COVER SCHEDULE



CORNER REINFORCEMENT LAP DETAIL

PIT WIDTH "W"	REINFORCEMENT
UP TO 1200	SL92
1201 – 1800	RL918
1801 – 2400	RL1218

REINFORCEMENT DETAILS

NOTES:

- PIPE CENTRE LINE TO BE $\frac{1}{2}$ PIPE Ø + 225mm BEHIND BACK OF KERB.
- PIT TO BE HAUNCHED WHERE THE PIPE DIAMETER PLUS 75mm IS GREATER THAN THE WIDTH OF THE PIT.
- INSTALL MIN. 100Ø mm PENETRATION FOR SUBSURFACE DRAINAGE.
- FLOOR OF PIT TO BE SHAPED ON COMPLETION OF PIT WITH NO SLUMP CONCRETE.
- SUBJECT TO COUNCIL APPROVAL PRECAST PITS COMPLYING WITH AS 5100 BRIDGE DESIGN AND VICROADS SPECIFICATION 705 DRAINAGE PITS MAY BE USED.
- HAUNCHED PITS DEEPER THAN 900mm TO BE FITTED WITH STEP IRONS (REFER SD280).
- PIT COVER LEVEL TO MATCH FINISHED SURFACE LEVEL.
- PIT COVERS TO BE IMPRINTED WITH THE CLASS OF THE COVER AND WEIGHT.
- FIBRE GLASS PIT COVERS TO BE FITTED WITH AN APPROVED LOCKING DEVICE AND INSTALLED TO OPEN TO THE VERGE SIDE OF THE ROAD.
- FIBRE GLASS PIT COVERS TO BE ATTACHED WITH 4 N° – 10mm DIA. 75mm LONG MASONRY ANCHORS OR AS PER MANUFACTURERS DETAILS.
- FIBRE GLASS PIT COVERS TO HAVE A CLEAR OPENING OF 900mm X 600mm.
- PITS GREATER THAN 1200 DEPTH TO BE REINFORCED
- CONCRETE PIT COVERS TO BE INSTALLED ON A 5mm BED OF MORTAR.
- FABRIC IN SHAFT TO HAVE MAIN BARS HORIZONTAL.
- CLEAR COVER TO REINFORCEMENT NOT LESS THAN 50mm.
- RETURN REINFORCEMENT BARS TO BE FABRIC OR EQUIVALENT BARS.
- CONCRETE STRENGTH 32 MPa AT 28 DAYS.
- NOT APPLICABLE TO MELBOURNE WATER CORPORATION DRAINAGE ASSETS. FOR MWC WORKS REFER TO MWC LAND DEVELOPMENT MANUAL.

HAUNCHED JUNCTION PITS
3601mm TO 10800mm DEPTH
N.T.S.

ALL DIMENSIONS IN mm

NOT TO SCALE

DATE	AMENDMENTS	INITIALS	HUME CITY COUNCIL	HAUNCHED JUNCTION PITS 3601mm TO 10800mm DEPTH	
JAN 2025	DETAILS HUME STANDARDS UPDATE	N.H		VERSION: A	DRAWING NO: SD241