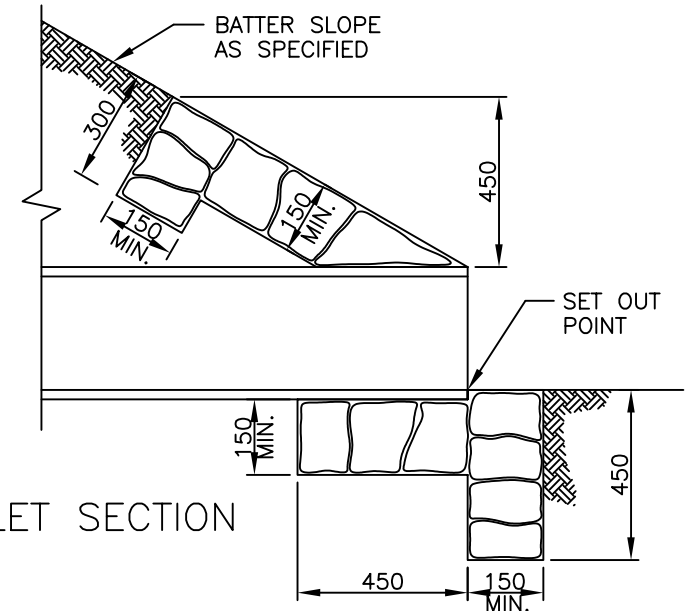
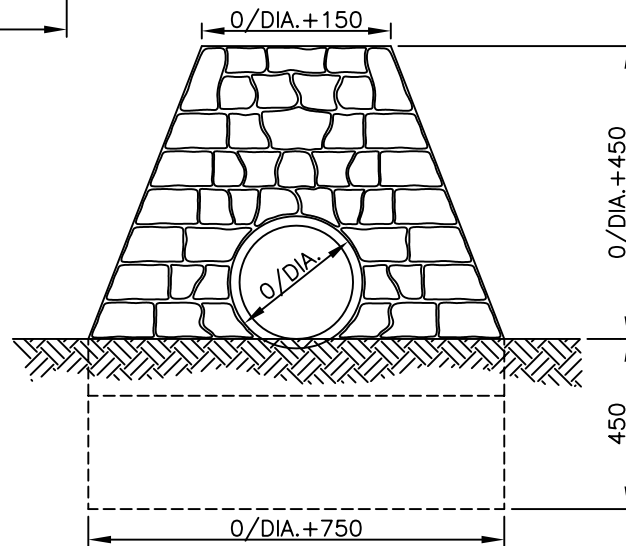


OUTLET SECTION



INLET SECTION



INLET AND OUTLET END ELEVATION

NOTES:

1. ROCKS SHALL BE SOUND, DENSE AND RESISTANT TO WEATHERING.
2. UNLESS USED FOR FILLING IN, ROCK SHALL WEIGH BETWEEN 20 AND 70 kg WITH 60% WEIGHING AT LEAST 40 kg.
3. GROUT SHALL BE 1 PART CEMENT TO 3 PARTS FINE SAND MIXED TO A STIFF CONSISTANCY.
4. TOLERANCE ON ROCKS 50mm DEVIATION.

Amendments			
No.	Detail	Initials	Date
A			

DRAWN : D. SALAZAR
 CHECKED : R. DEVAPURA
 APPROVED : S. PLATER
 SCALE : 1 : 20
 ISSUE DATE: JUNE 2004



PO Box 119
 1079 Pascoe Vale Road
 Broadmeadows
 Victoria 3047
 Telephone
 03) 9205 2200
 Facsimile
 03) 9309 0109

TYPE :	GRouted MASONRY ENDWALL
DRAWING NO:	SD255