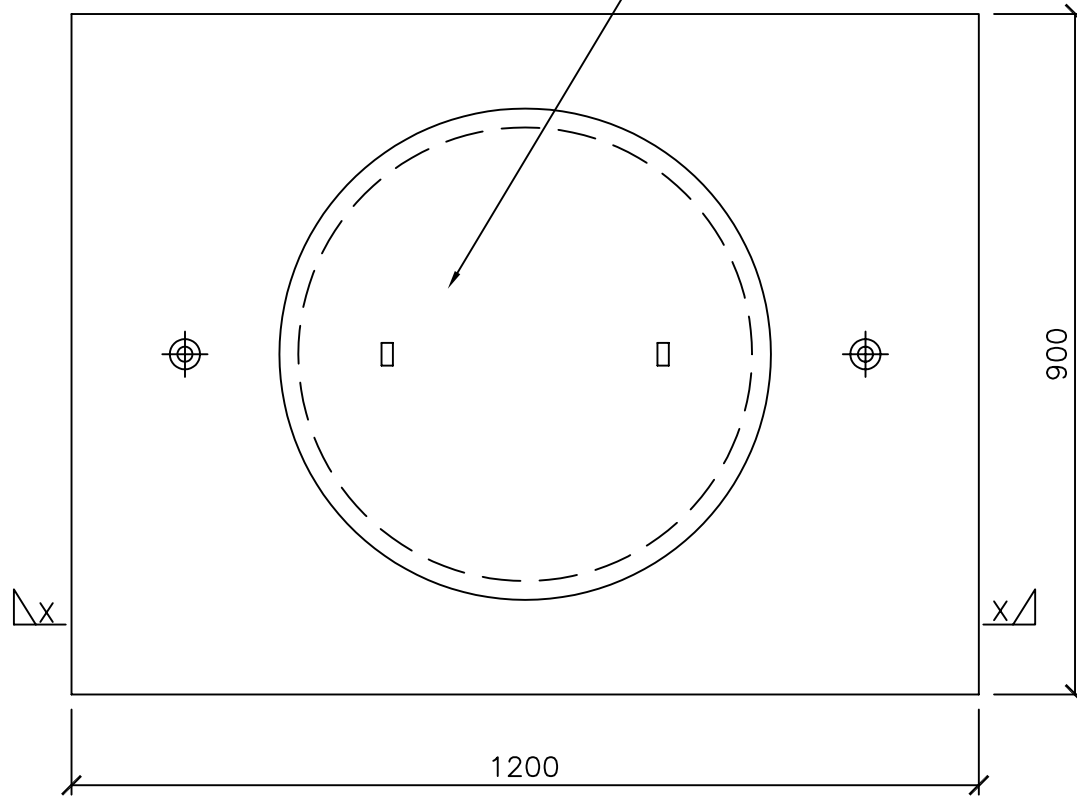
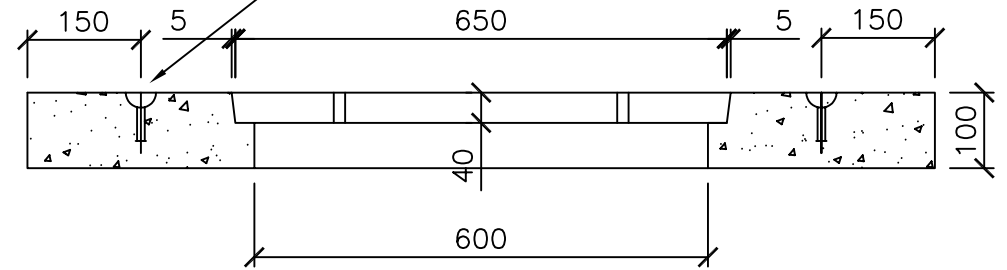


CLASS B CONCRETE FILLED  
CIRCULAR CAST IRON INSERT WITH  
2 STANDARD LIFTING KEY LUGS



PLAN

2 NO. 1.3 TONNE X 55 LONG  
SWIFT LIFTS FOR HANDLING



SECTION X-X

- NOTES: 1. THIS PIT LID TO BE USED ON ALL PITS WITH  
INTERNAL DIMENSIONS 900 x 600 AND LARGER.  
2. CONCRETE STRENGTH 25Mpa AT 28 DAYS

ALL DIMENSIONS ARE IN MILLIMETRES.

Amendments			
No.	Detail	Initials	Date

DRAWN :	S. ADAMS
CHECKED :	R. DEVAPURA
APPROVED :	S. PLATER
SCALE :	1 : 15
DATE:	JUNE 2004



PO Box 119  
1079 Pascoe Vale Road  
Broadmeadows  
Victoria 3047

Telephone  
03) 9205 2200

Facsimile  
03) 9309 0109

PRECAST CONCRETE PIT LID  
WITH CAST IRON INSERT

DRAWING NO:

SD275