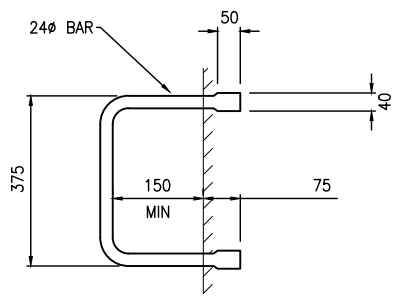
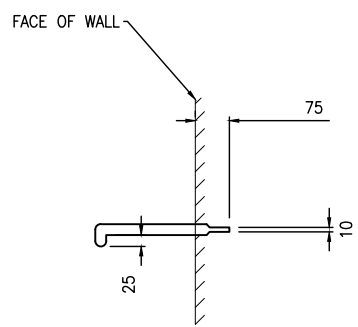
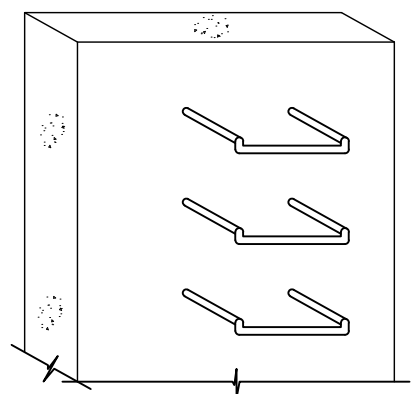
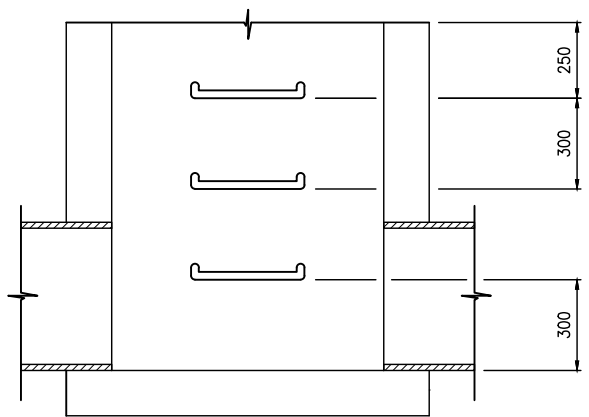


**PLAN**  
NOT TO SCALE



**STEP IRON DETAILS**  
NOT TO SCALE




**SECTION A - A**  
NOT TO SCALE

**STEP IRONS**  
NOT TO SCALE

**NOTES:**

1. PITS DEEPER THAN 1000 TO BE FITTED WITH STEP IRONS.
2. STEP IRONS SHALL BE LOCATED DIRECTLY BELOW THE OPENING IN THE COVER AND DESIRABLY ON A WALL WITHOUT PIPE OPENINGS.
3. WHERE STEP IRON LADDER CHANGES FROM ONE WALL TO THE ADJACENT WALL, STEP IRON LADDERS TO OVERLAP BY 1200mm MINIMUM.
4. STEEL FOR STEP-IRONS SHALL BE STRUCTURAL GRADE 250 TO AS3679 PART 1.
5. STEP IRONS SHALL HAVE SHARP EDGES ROUNDED AND HOT DIP GALVANISED AFTER FABRICATION TO AS/NZS 4680.
6. PROPRIETARY POLYPROPYLENE STEP IRONS (OR APPROVED ALTERNATIVE) MAY BE USED. THESE SHALL BE INSTALLED ACCORDING TO THE MANUFACTURERS INSTRUCTIONS.
7. FOR PRECAST PITS, STEP IRONS SHALL BE LOAD TESTED TO AS4198/1994.
8. FOR REINFORCEMENT DETAILS REFER TO SD 230, 231, 240 & 241

NOT TO SCALE

AMENDMENTS				STEP IRONS	
DATE	DETAILS	INITIALS			
NOV 2022	INITIAL HUME STANDARDS UPDATE	T.D		VERSION: A	DRAWING NO: SD280