



HUME CITY COUNCIL  
**SAFE IN HUME:  
OUR COMMUNITY  
SAFETY PLAN**  
**2020 - 2022**

[www.hume.vic.gov.au](http://www.hume.vic.gov.au)





## ACKNOWLEDGMENT OF TRADITIONAL OWNERS

Hume City Council recognises the rich Aboriginal heritage within the municipality and acknowledges the Gunung-Willam-Balluk of the Wurundjeri as the Traditional Custodians of this land.

Council embraces Aboriginal and Torres Strait Islander living cultures as a vital part of Australia's identity and recognises, celebrates and pays respect to the existing family members of the Gunung-Willam-Balluk and to Elders past, present and future.



# HUME CITY COUNCIL **SAFE IN HUME:** **OUR COMMUNITY SAFETY PLAN** **2020 - 2022**

## CONTENTS

<b>1 INTRODUCTION</b>	4
International Safe Community Accreditation	4
<b>2 BACKGROUND</b>	5
How the plan was made	5
Alignment with relevant council plans and policies	5
Safe in Hume – What people said	6
Hume’s Community Safety Profile	8-9
<b>3 THEMES</b>	10
Action Plan: Community Safety in the Public Realm	14-15
Action Plan: Safety Around the Home	16
Action Plan: Transport Safety	17
Action Plan: Family Violence and Women’s Safety	18
<b>4 REPORTING</b>	19
<b>5 MONITORING AND EVALUATION</b>	19



## 1. INTRODUCTION

Community safety has a significant impact on health and wellbeing. When people feel safe in their communities they are more likely to be confident, involved in activities and well-connected socially.

Hume City Council aspires to be a safe community, where individuals living, working and visiting Hume actively participate in the community without fear or risk of harm.

Safe in Hume: Our Community Safety Plan has been developed to guide Council to achieve this vision. The actions aim to enhance people's feelings of safety, their perceptions of safety, prevent the likelihood of crime as well as coordinate community actions across the City. The Plan aligns with the Hume Horizons 2040 Plan and builds upon the Hume City Council Community Safety Action Plan 2015-2019, which outlined the approach Council would take towards fostering community safety throughout the municipality.

Community safety is characterised by community-wide participation in developing and delivering initiatives to improve the health, safety and wellbeing of populations at the local level in order to reduce the impact of unintentional injury, crime, violence and emergency situations on communities. To address the complex nature of community safety, Safe in Hume takes a collaborative approach, encouraging widespread coordination between Council, key stakeholders and the broader municipality. Council is able to influence actual and perceived levels of community safety through:

- the development of quality infrastructure and urban design;
- place management and activation;
- community development and health promotion initiatives;
- building partnerships and advocacy;
- undertaking research and community engagement; and
- enforcing local laws.

This involves working closely with residents, businesses, community groups, emergency services, peak bodies and Federal and State governments. Through these partnerships, Hume City Council will continue to identify and implement effective solutions to local community safety issues.

### **International Safe Community Accreditation**

Since February 1996, Hume City Council has been designated as an International Safe Community by the World Health Organisation (WHO). This international accreditation further demonstrates Council's commitment to safety promotion and injury prevention across the municipality. It is achieved through the satisfactory meeting of seven key indicators, which have been integrated into this Plan:

1. An infrastructure based on partnership and collaborations, governed by a cross-sector group that is responsible for safety promotion in their community.
2. Long-term, sustainable programs covering genders and all ages, environments, and situations.
3. Programs that target high-risk groups and environments, and programs that promote safety for vulnerable groups.
4. Programs that are based on the available evidence.
5. Programs that document the frequency and causes of injuries.
6. Evaluation measures to assess their programs, processes and the effects of change.
7. On-going participation in national and international Safe Communities networks.



## 2. BACKGROUND

### How the plan was made

*Safe in Hume* was developed in collaboration with Council staff, stakeholders and the general community. The Plan builds upon the previous *Community Safety Action Plan 2015-2019* and associated research and consultation.

Key steps included reviewing the previous plan, analysing current research and developing a detailed *Hume City Community Safety Profile*. A variety of community consultation and engagement was also undertaken including: an online community survey, a series of key stakeholder workshops and presentations to the Hume City Council Community Safety Advisory Committee.

### Alignment with relevant council plans and policies

The following policies and strategies have informed the development of *Safe in Hume*:

#### International

<i>International Safe Communities, World Health Organisation</i>	An internationally recognised framework with seven community safety indicators, which Hume must fulfill to remain certified.
--	--

#### National

<i>Australian Institute of Criminology: National Crime Prevention Framework</i>	Outlining the most effective approaches to the prevention of crime based research from the Australian Institute of Criminology.
---	---

#### Victoria

<i>2019-20 Community Safety Statement</i>	A shared commitment between the Victorian Government and Victoria Police to reduce crime and keep our state safe.
---	---

#### Local

<i>Hume Horizons 2040</i>	Hume City Council's long-term community plan, outlining a clear and ambitious future for the years to come. The plan was developed following extensive stakeholder consultation and brings together the collective ideas of the Hume community.
<i>Hume City Council Plan 2017-2021</i>	Annual actions which aim to address community expectations within Hume Horizons 2040 and reinforces Council's commitment to community safety.
<i>Hume City Council Health and Wellbeing Plan 2017-2021</i>	Providing guidance to improve the health and wellbeing of people living and working in the municipality of Hume.
<i>Hume City Council Social Justice Charter 2014</i>	Hume City Council prides itself on having a strong commitment to social justice and human rights. The Charter was developed in close consultation with the community and considers our requirements under the Victorian Charter of Human Rights and Responsibilities Act 2006.

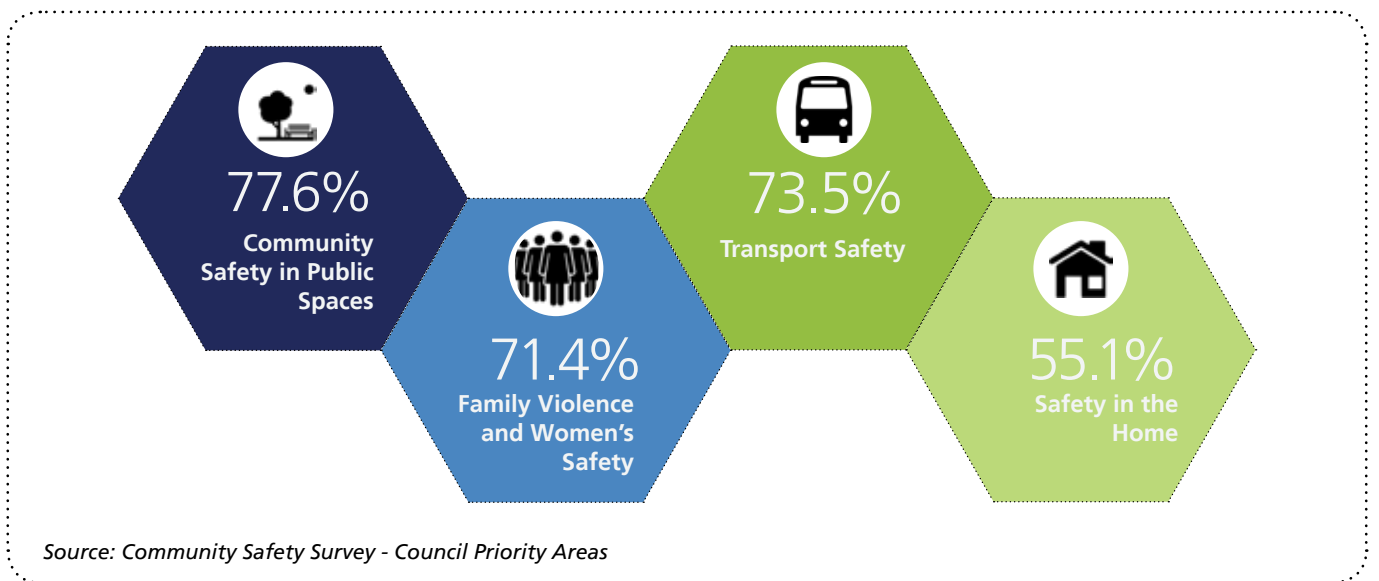
## Safe in Hume – What people said

A targeted community engagement approach was adopted during the development of Safe in Hume to ensure that strategies are based on best practice and professional advice from key stakeholders who work in the community safety sector.

The engagement results built upon Council’s previous consultation findings and evidence base, which highlighted ongoing trends and priorities in community safety. The synthesis of this data provides an ongoing understanding of the safety concerns of those who live, work and spend time in Hume City.

Respondents shared their feedback on Council’s community safety priorities and told us what was important to them. Some of the key themes identified from the survey included:

- road and transport safety
- hoon driving
- safety in public spaces
- improvements to amenity
- crime and anti-social behaviour
- racism and social cohesion
- women’s safety



### Transport Safety & Safety in the Public Realm

- Improving natural surveillance and visibility
- Enhancing safety of pedestrians and cyclists
- Involving the community
- Facilitating education and support

### Safety in the Home

- Educating and informing communities
- Developing and improving partnerships with local organisations
- Advocating to State and Federal Government
- Planning and preparing for emergencies

### Family Violence and Women's Safety

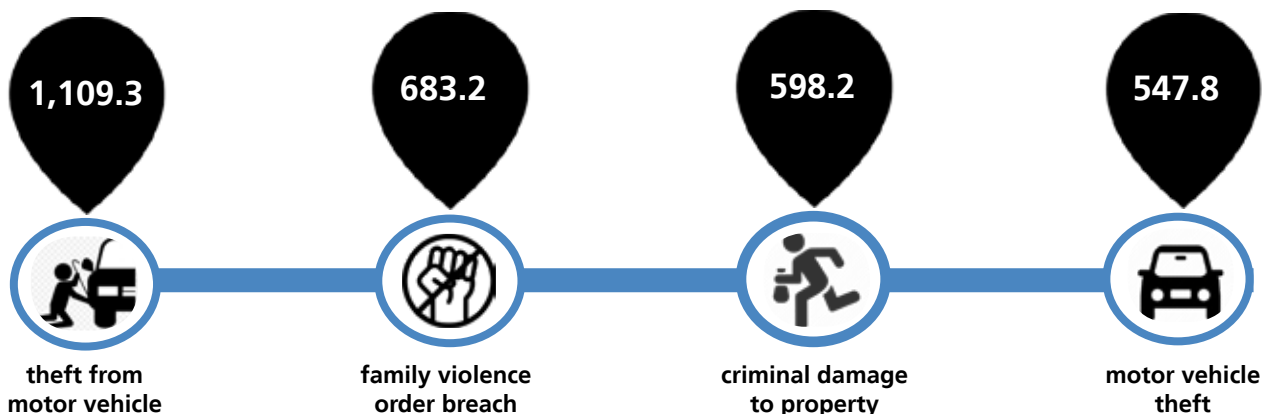
- Setting a standard for gender equity
- Working with people from different cultures and faith groups
- Positive messaging
- Encouraging male participation
- Collaborating with local and community organisations

Source: Stakeholder Workshops - Key Themes



## Hume's Community Safety Profile

In 2018, across most crime categories, Hume City recorded higher rates per 100,000 population than Melbourne. Crimes with the highest rate per 100,000 population in Hume, some key statistics to note are:




**83.8%** 

Four out of five residents (83.8%) indicated that they felt 'safe' or 'very safe' when walking alone in their local area during the day.

**40.8%** 

Two out of five respondents (40.8%) indicated that they felt either 'safe' or 'very safe' walking alone at night.


From 2013-2018 there were 17,671 hospital admissions among residents of Hume Council, some key statistics to note are:

**90%** 

90% (n=15,963) of these were due to unintentional injuries.

**158** 

There were 158 reported dog attacks in Hume in 2018/19, down from 177 in 2017/18 and 174 in 2016/17.

**59.8%** 


Male residents of Hume are more frequently injured (59.8%) than females (40.2%), and those aged 20-24 year old were more frequently injured.

**2,397** 

The most common unintentional injuries were transport related (n=2,397).

**2201.7** 

In the period 2013 to 2017 the rate of falls among residents aged 65+ was 2201.7.

**3,688** 


Over the past five years, the location that Hume residents are injured unintentionally is in the home (n= 3,688).



From 2014 to 2018, a total of 2,143 crashes occurred on all State and local roads controlled by Council and VicRoads in Hume City, some key statistics to note are:

**2,397** 

There were 22 fatal crashes and 421 serious injury crashes in the period 2014 to 2018.

**2228** 

In the past five years 2228 vehicles were impounded in Hume City.

On average in 2017/18, 65 incidents of family violence were reported to police each week in Hume, some key statistics to note are:

**3,376**

In Hume City, reports of family violence incidents have increased to 3,376 in 2017/18.

**1,493.8**

The rate of family violence incidents per 100,000 population in Hume City is 1,493.8

**349.2**

There were 349.2 Family Violence Intervention Orders reported in court in 2014-2018 in Hume.

**75%**

Across Victoria, in 2017/18 three quarters of family violence victims were female (75%), with the majority of perpetrators being male.





### 3. THEMES

*The Hume Horizons 2040 Plan* has identified community safety as one of the priority areas and aspirations for the Hume community. The overarching Community Safety Goal for Safe in Hume is:

“for Hume City to be an active, harmonious, safe city where everyone who lives, works or visits participates responsibly without fear or risk of injury.”

Four themes and associated objectives have been identified to support the community in achieving this.



## Community Safety in the Public Realm

A safe community is one that is characterised by well-designed and maintained public spaces that are developed and managed in such a way as to lessen or prevent the incidence of crime. 94% of Community Safety survey respondents identified this as a priority area of concern, and a focus for action. The application of Crime Prevention Through Environmental Design (CPTED) principles to Council's built and natural environment can influence the safety and wellbeing of the community through:

- Increasing community usage of public places.
- Achieving connection and integration of streets and public places.
- Reducing opportunities for crime and anti-social behaviour.
- Improving the quality of life for the community by improving perceptions of public places.
- Creating more liveable and sustainable environments.

## Safety Around the Home

The most common place for injuries to occur is in and around the home. Potential injuries and causes include: burns and scalds, poisoning, falls, poorly designed products/play equipment, drowning, cuts and piercing and choking or asphyxiation.

In Hume, there were 17,671 hospital admissions recorded among residents between 2013-2018. The rate of unintentional injuries per 100,000 population increased within this timespan from 1321.4 to 1780.4.

Many of these unintentional injuries are preventable. Unintentional injuries are a leading cause of death for children and are a major reason for hospital and emergency department admissions in Victoria. Injuries in the home can also have serious implications for older people.

Council plays a variety of roles in helping to address safety in the home including:

- Regulation control and law enforcement e.g. pool fences, animal management etc.
- Emergency management planning, response and recovery from emergency events i.e. impact of floods and fires on homes.
- Community safety information and education programs to help reduce unintentional injuries.
- Provision of programs, services and infrastructure that help facilitate 'active' lifestyles to help reduce the risk of falls or injuries.

A community in which there are high levels of social engagement, participation and activity

in the neighbourhood helps foster community connectedness and improve people's perception of safety. Fostering community and economic participation and strengthening social cohesion are also recognised crime prevention initiatives.

## Transport Safety

The planning, development and delivery of a safe transport network is an important element towards achieving a safe community through reducing motor vehicle, pedestrian and cyclist injuries and fatalities. There was approximately one road accident per day involving an injury or fatality on roads managed by Council and VicRoads in Hume City between 2014-2018. With such a prevalence of incidents, this is a high priority for safety in our community.

Council has a well-developed understanding of the transport needs of the Hume community including road safety, public transport and active transport (walking and cycling). Council is committed to enhancing road and pedestrian safety through reducing dangerous hoon driving and speeding in local streets as well as supporting integrated and efficient walking, cycling and public transport options. Well-designed and maintained transport hubs help improve people's perceptions of safety in the public realm. Council is also an important partner with Victoria Police and VicRoads in pedestrian safety and general road safety education.

## Family Violence and Women's Safety

Over the last decade Victorian Councils have become leaders in preventing violence against women and families. On average, each week 65 incidents of family violence were reported to police in Hume (2017-18). Statistically, the municipality has the second highest rate of family violence per 100,000 population across Metropolitan Melbourne.

Councils engage with individuals, families, organisations and communities and therefore can play an important role in influencing cultural and social norms. Council involvement in the primary prevention of violence against women and families is critical in creating safe, inclusive and respectful workplaces and communities.

Hume City Council is a staunch advocate for reducing the prevalence and impact of violence against families and women in the community and works collaboratively with the Victorian Government and the community to provide quality information, education, prevention and response initiatives.



## Action Plan:

# Community Safety in the Public Realm

Objective 1.1 Promote community safety within public spaces through the application of the Hume Planning Scheme and Crime Prevention Through Environmental Design (CPTED) practices.			
Item	Action	Responsibility	Timing
1.1.1	Continue to implement Safer by Design Guidelines through the application of the Hume Planning Scheme and engagement with the wider community early in the design process.	<b>Lead:</b> Statutory Planning <b>Support:</b> Strategic Planning, Urban and Open Space Planning	Ongoing
1.1.2	Raise awareness about safe design and CPTED principles and improve the collaborative knowledge of Council staff and land developers.	<b>Lead:</b> Community Strengthening <b>Support:</b> Statutory Planning, Strategic Planning, Urban & Open Space Planning	Annually
<b>Objective 1.2 Increase community safety through effective management and maintenance of public spaces.</b>			
Item	Action	Responsibility	Timing
1.2.1	Address reports of vandalism and graffiti within public spaces in accordance with Council plans and policies.	<b>Lead:</b> Waste and Resource Recovery	Ongoing
1.2.2	Respond to requests for maintenance, repair or replacement of lighting, signage, landscaping, public toilets and other elements of the public realm to provide safe and welcoming spaces.	<b>Lead:</b> Parks, Assets, Capital Works and Building Maintenance	Annually
1.2.3	Provide key stakeholders with opportunities to collaborate and share information regarding the effective management and maintenance of public spaces.	<b>Lead:</b> Community Strengthening	Ongoing
1.2.4	Implementation of the Hume City Council CCTV Camera Policy.	<b>Lead:</b> Community Strengthening	Quarterly
			Annually Quarterly

**Objective 1.3 Promote the safe and accessible use of public spaces and facilities.**

Item	Action	Responsibility	Timing	Outcome/Outputs
1.3.1	Implement and support community initiatives and events in public spaces to encourage their active, inclusive and positive use.	<b>Lead:</b> Community Strengthening, Communication and Events	Annually	Delivery of a minimum of three place-based community initiatives and events in public spaces including festivals, markets, street activation projects, art exhibitions and outdoor entertainment.
1.3.2	Ensure key safety messages, programs and activities are communicated effectively and inclusively across our diverse community.	<b>Lead:</b> Community Strengthening, Communication and Events	Annually  Year Two	Key community safety messages, programs and activities are promoted: <ul style="list-style-type: none"> <li>using a variety of communication tools.</li> <li>in the top three languages spoken in the targeted community or public space.</li> </ul> Inclusion of community safety messages in the re-development of Hume City Council's website.



## Action Plan:

### Safety around the Home

Objective 2.1: Promote and raise awareness of community safety issues in and around the home.			
Item	Action	Responsibility	Outcome/Outputs
2.1.1	Implement and support programs and activities that inform and educate the community about safety and injury prevention.	<b>Lead:</b> Community Strengthening <b>Support:</b> Leisure Centres and Sport, Health and Wellbeing, Family Youth and Children Services	Delivery of a minimum of three initiatives each year that build community awareness and understanding including: <ul style="list-style-type: none"> <li>Programs and services that promote physical activity and healthy lifestyles.</li> <li>Provision of information to groups such as Senior Citizen Clubs and Senior Activity Centres.</li> <li>Road safety or cyber bullying information sessions for children, young people and parents.</li> </ul>
2.1.2	Facilitate community education campaigns and continue with the effective operation of Council's animal management services to encourage responsible pet ownership and behaviours.	<b>Lead:</b> Governance (City Laws) <b>Support:</b> Community Strengthening	Facilitation of an annual community education campaign about safe and responsible pet ownership. Implementation of the Hume City Council Domestic Animal Management Plan in accordance with agreed timelines, targets and resources.
Objective 2.2: Collaborate with the community to foster community connectedness and resilience within their neighbourhoods.			
Item	Action	Responsibility	Outcome/Outputs
2.2.1	Promote and support neighbourhood community safety initiatives and projects that help strengthen communities or build better relationships through the Hume City Council Community Grants program.	<b>Lead:</b> Community Strengthening	Local communities take pride and ownership in addressing issues that are important to them by delivering community safety initiatives and neighbourhood projects.
2.2.2	Work with the community to promote key community safety messages during Community Safety Month.	<b>Lead:</b> Community Strengthening	Partnerships developed with local community groups and businesses to plan and deliver a minimum of three neighbourhood-based activities for Community Safety Month.
2.2.3	Support the operation of services and hubs to strengthen local community connections and build resilience.	<b>Lead:</b> Community Strengthening	Funding and/or support is provided for the delivery of place-based community programs and activities in Community Centres/Hubs, Neighbourhood Houses and Men's Sheds.



## Action Plan:

## Transport Safety

Objective 3.1: Promote safe driver behaviour and safe active transport.				
Item	Action	Responsibility	Timing	Outcome/Outputs
3.1.1	Plan and deliver programs to improve skills and raise awareness about safe, respectful behaviour and practices.	<b>Lead:</b> Community Strengthening <b>Support:</b> Assets	Twice Annually	Delivery of two road and bicycle safety education and information programs each year, including <i>Fit2Drive</i> , child restraint checking and Bike Education programs.
3.1.2	Assist learners under 21 years of age, who do not have access to a supervising driver or vehicle, to gain the driving experience required to apply for a probationary licence and drive safely on our roads.	<b>Lead:</b> Community Strengthening <b>Support:</b> HWLLEN	Ongoing	Delivery of the <i>TAC L2P</i> Learner Driver Mentor Program to a minimum of 45 young drivers annually within Hume.
3.1.3	Work with the police to educate the community about vehicle theft prevention initiatives.	<b>Lead:</b> Community Strengthening	Annually	Delivery of at least one awareness campaign or program in partnership with police, such as <i>Operation Bounce Back</i> .
Objective 3.2: Advocate for and support the delivery of road networks and public transport hubs that are safe and inclusive for all users.				
Item	Action	Responsibility	Timing	Outcome/Outputs
3.2.1	Advocate for and support the delivery of public transport hubs that are safe and inclusive for all users.	<b>Lead:</b> Community Strengthening, Assets, Communication and Events	Ongoing	Minimum of two Community Safety Audits undertaken each year of major public rail/bus transport hubs within Hume to assess lighting, natural surveillance, infrastructure and maintenance levels. Development and implementation of two advocacy initiatives for safer road networks



## Action Plan:

# Family Violence and Women's Safety

Objective 4.1: Promote equal and respectful relationships to address issues of violence within the family and broader community.			
Item	Action	Responsibility	Timing
4.1.1	Raise awareness of family violence (including elder abuse) and the support services available in our community.	<b>Lead:</b> Community Strengthening	Annually
4.1.2	Work with the community to plan and deliver targeted initiatives that promote respectful relationships.	<b>Lead:</b> Community Strengthening	Annually
4.1.3	Promote gender equitable and respectful practices at community facilities and sporting clubs.	<b>Lead:</b> Community Strengthening <b>Support:</b> Leisure Centres and Sport	Year 2
<b>Outcome/Outputs</b>			
Delivery of programs and information for at least one nationally or internationally recognised family violence awareness campaigns, such as the 16 Days of Activism and the Week Without Violence.		Delivery of three programs or information campaigns about respectful relationships in partnership with targeted cultural and community groups.	
Development and implementation of Gender Equity guidelines for Council's community facilities and sporting clubs.			
Objective 4.2: Plan, develop and implement primary prevention strategies to foster a culture of respect and inclusivity.			
Item	Action	Responsibility	Timing
4.2.1	Develop and maintain partnerships in the community to take a collaborative approach in the prevention of family violence.	<b>Lead:</b> Community Strengthening <b>Partners:</b> Women's Health in the North	Ongoing
4.2.2	Investigate and address the causes of family violence.	<b>Lead:</b> Community Strengthening <b>Support:</b> Leisure Centres and Sport, Health and Wellbeing, Family, Youth and Children Services	Year 1
<b>Outcome/Outputs</b>		Completion of at least 75 percent of actions pledged in Council's commitment to the Building a Respectful Community Strategy in partnership with its stakeholders and Women's Health in the North.	
Delivery of at least one program or initiative to support mental health and positive parenting groups.			

#### 4. REPORTING

Council will report annually on the progress and achievements of Safe in Hume: Our Community Safety Plan to the community and its partners. The annual report will include the following information:

- Overview of achievements against the planned actions of the Implementation Plan.
- Overview of key priorities for the next year.

#### 5. MONITORING AND EVALUATION

Monitoring and evaluation will occur on an ongoing basis, predominantly through the meetings of the Hume Community Safety Advisory Committee, statistical data and findings from Community Safety Forums. The monitoring and evaluation of actions will include reporting on the performance indicators and outcome measures identified for each theme.



# HumeLink

Hume City Council's  
multilingual telephone information service.  
**General enquiries: Telephone 9205 2200**

للمعلومات باللغة العربية	9679 9815
معلومات باللغة العربية	9679 9809
Za informacije na <b>bosanskom</b>	9679 9816
Za informacije na <b>hrvatskom</b>	9679 9817
Για πληροφορίες στα <b>ελληνικά</b>	9679 9818
Per avere informazioni in <b>italiano</b>	9679 9819
За информације на <b>српском</b>	9679 9820
Para información en <b>español</b>	9679 9821
<b>Türkçe</b> bilgi için	9679 9822
Muốn biết thông tin tiếng <b>Việt</b>	9679 9823
<b>For other languages...</b>	9679 9824

