



## BUILDING A BETTER HUME

# Progress Reserve Fact Sheet

## We're upgrading Progress Reserve to create spaces for everyone to play!

### What we're doing

As part of the Progress Reserve Masterplan, we're carrying out valuable upgrades in three stages.

Stage one will provide a range of play equipment for all age and abilities and facilitate play and recreation in a safe and inclusive environment, while reflecting the diversity of the Coolaroo community.

#### Stage one will include a new purpose-built play and recreation environment, which will include:

- scooter track
- covered picnic and BBQ area
- nature play area
- climbing tower and tunnel play
- junior and senior play areas and equipment
- landscaped garden
- tree planting
- connected path network
- irrigated lawn
- new public toilets.

### Why we are doing it

To provide the Coolaroo and broader Hume communities with quality recreational open space for all ages and abilities to meet and socialise in an inviting, safe and relaxed environment.

#### Improved recreational and open space parkland

Providing more defined recreational and social precincts within Progress Reserve by upgrading the existing playspace, providing new activity areas, fitness station and new family picnic and BBQ areas.

#### Equitable play

Progress Reserve will become a fine example of accessible and equitable play areas that allow everyone to play. The reserve will provide a range of activities and equipment for all ages and abilities in a safe and inclusive environment.

#### Improved access and connectivity

Progress Reserve will play a major part in the open space network by linking parklands through a safe and connected cycle and walking network.

A new lighted internal pedestrian path will be provided to enable safe path of travel to Coolaroo station through the reserve.

#### Sustainable design

Environmental sensitivity is central to the improvement at Progress Reserve through the use of recyclable products to ensure the life cycle of materials, furniture and fixtures is environmentally and economically sustainable.

Storm water and road run off will be managed through vegetated swales and rain gardens throughout the reserve.

Selective tree planting species and landscaping will provide extra canopy, shade and microclimate in response to the heat island effect in urban centres.

This project is being delivered in partnership between Hume City Council and the Victorian Government.



# Progress Reserve Masterplan



- PRELIMINARY**
- 1 Assemble Play Space
  - 2 Scooter Track
  - 3 Public Toilets
  - 4 Multipurpose Netball and Futsal Courts
  - 5 Hit-Up and Climbing Wall
  - 6 Basketball Half Court & Skate Court
  - 7 Ping Pong Tables
  - 8 Fitness Station
  - 9 Memorial Garden
  - 10 Picnic and BBQ Facilities
  - 11 Passive Recreational Space
  - 12 Childers Crescent Entrance Plaza
  - 13 Southern Plaza
  - 14 Western Oval
  - 15 Cricket Practice Nets
  - 16 Carpark
  - 17 Pavilion / Community Centre
  - 18 Pavilion Forecourt / Plaza
  - 19 Dog Off-Lead area

- LEGEND**
- Existing trees to be retained
  - Trees to be removed
  - New Deciduous Trees
  - New Evergreen Trees
  - Planted Garden Beds
  - Rain Gardens (Carpark area)
  - Gross Mounds
  - Painted Swales
  - Picnic Shelter
  - Double Electric BBQ
  - Picnic Tables
  - Park Seat
  - Accessible Drink Fountain
  - Bin/Big Enclosure
  - Hot Coal Bin
  - Bicycle Hoop
  - Maintenance Access Gate
- Seating Wall
  - Intersected Seating Wall
  - New Park Sign
  - Wayfinding Sign
  - Regulatory Sign
  - Memorial
  - Information Tower (proposed location)
  - Rain Water Tank
  - P1 Lighting
  - P2 Lighting
  - Existing Sports Field Lighting
  - Park Entrance
  - 3m Shared Use Concrete Path
  - 2.0m Concrete Path
  - Internal Concrete Connecting Path
  - Concrete Paving with Pattern Mould
  - Exposed Aggregate Paving

# Progress Reserve Landscape Masterplan – Stage One Playspace Upgrade



## LEGEND

- NEW EVERGREEN TREES
- NEW DECIDUOUS TREES
- EXISTING TREES
- NEW GARDEN BED PLANTING
- NEW LAWN
- NEW ARTIFICIAL TURF
- NEW MOUND
- NEW SOFTFALL RUBBER
- NEW SOFTFALL MULCH
- NEW PAINTED/DETCHED CONCRETE PATTERN
- NEW CONCRETE PAVING - 2.0m PATH
- NEW PROPOSED COLOURED ASPHALT
- NEW PROPOSED ASPHALT
- NEW JUNIOR ROCKERS
- NEW NEST SWING
- NEW TRAMPOLINE ROUND
- NEW CARROUSEL
- NEW TOWER PLAY
- NEW 3 WAY SEESAW
- NEW COMMUNITY SWING
- NEW PROPRIETARY CLIMBING
- NEW RELAXING HAMMOCK
- NEW CHIN-UP BARS
- NEW TIMBER BALANCE BEAM
- NEW TALKING TUBES
- NEW SEATING TYPE 1
- NEW SEATING TYPE 2
- NEW TABLE
- NEW BBQ
- NEW STEPPING LOGS
- NEW SEATING LOG
- NEW ACTIVE DECK
- NEW DRINKING FOUNTAIN
- NEW BIN

### Picnic facilities



### Public toilets



### Senior play



### Junior play



### Inclusive play



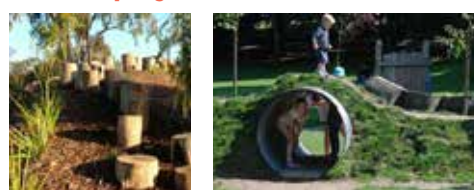
### Scooter track



### Cognitive and sensory play



### Nature play



### Landscape planting





## Timeline

- 2018**  
 Community and Stakeholder engagement undertaken to inform the development of the Progress Reserve Masterplan
- 2019**  
 Development of the Progress Reserve Master Plan based on community feedback
- 2020**  
 Progress Reserve Mastepplan adopted
- June 2021**  
 Detailed design
- December 2021**  
 Stage one construction tendered
- Early 2022**  
 Construction of stage one begins
- Late-2022**  
 Completion of stage one construction
- Late-2022**  
 Opening of stage one and the new playspace precinct
- 2022 – 2023**  
 Construction of stage two and three

## Project information

**Project name:** Progress Reserve Masterplan

**Project cost:** \$4.4 million

**Location:** Almurta Avenue, Coolaroo

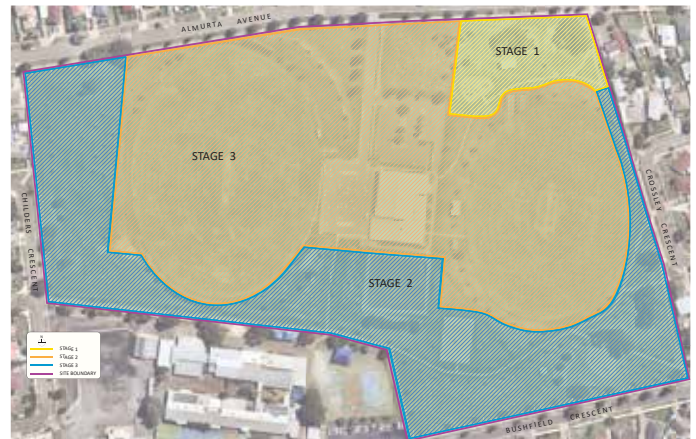
## More information

Scan the QR code to stat up-to-date with this project or read this information in other languages.

If you have any questions about this project email [parkplanning@hume.vic.gov.au](mailto:parkplanning@hume.vic.gov.au)



## Implementation plan by stages



## Building a better Hume

This project is part of Council's record \$443 million capital works program delivering more than 500 projects over the next four years, creating local construction jobs and stimulating our economy.

Use the interactive map on our website to find out about projects in your area:

[projects.hume.vic.gov.au](https://projects.hume.vic.gov.au)



Information is current at the time of printing (April 2022). Due to unforeseen circumstances, changes may occur.